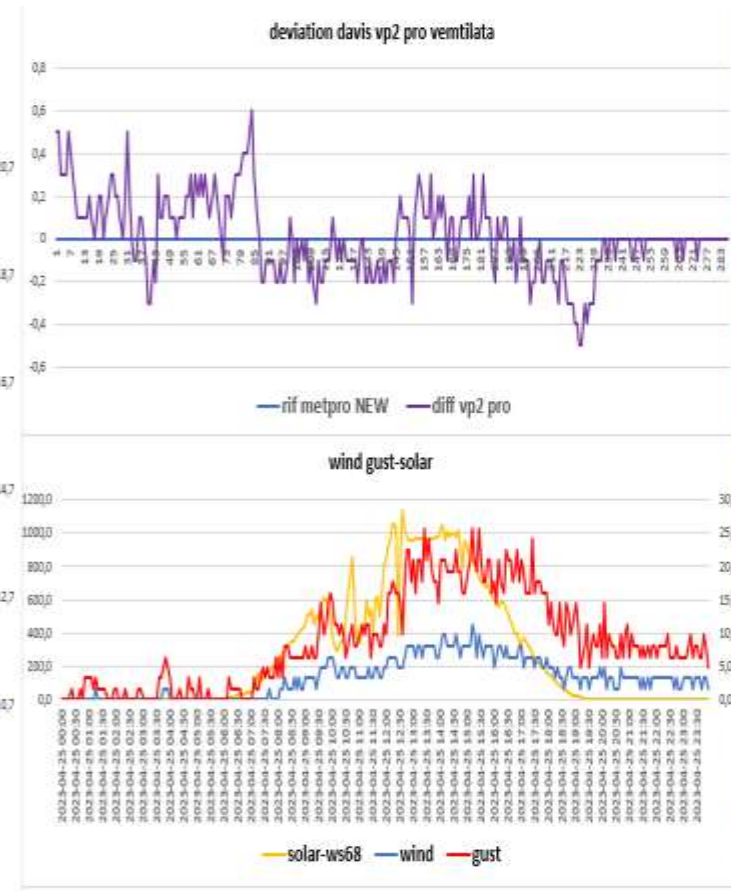
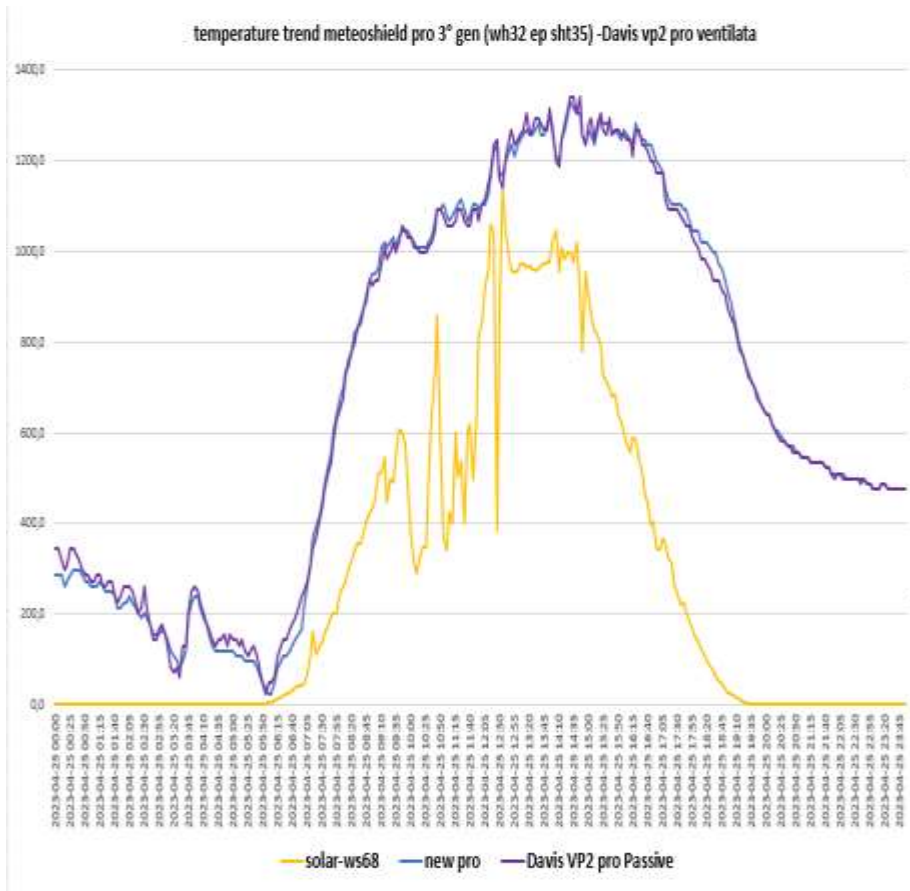
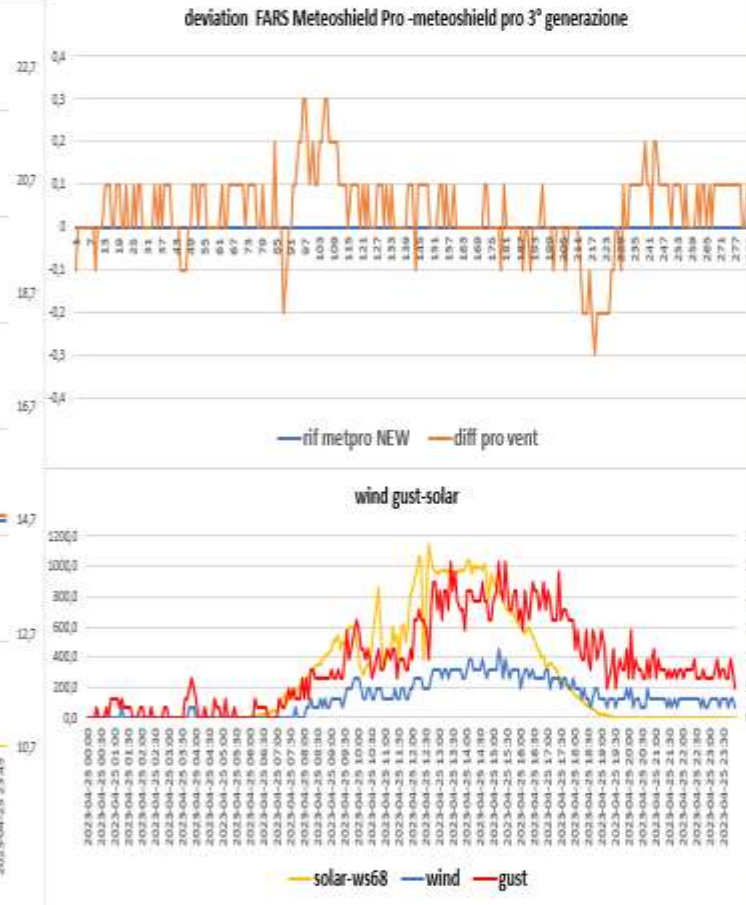
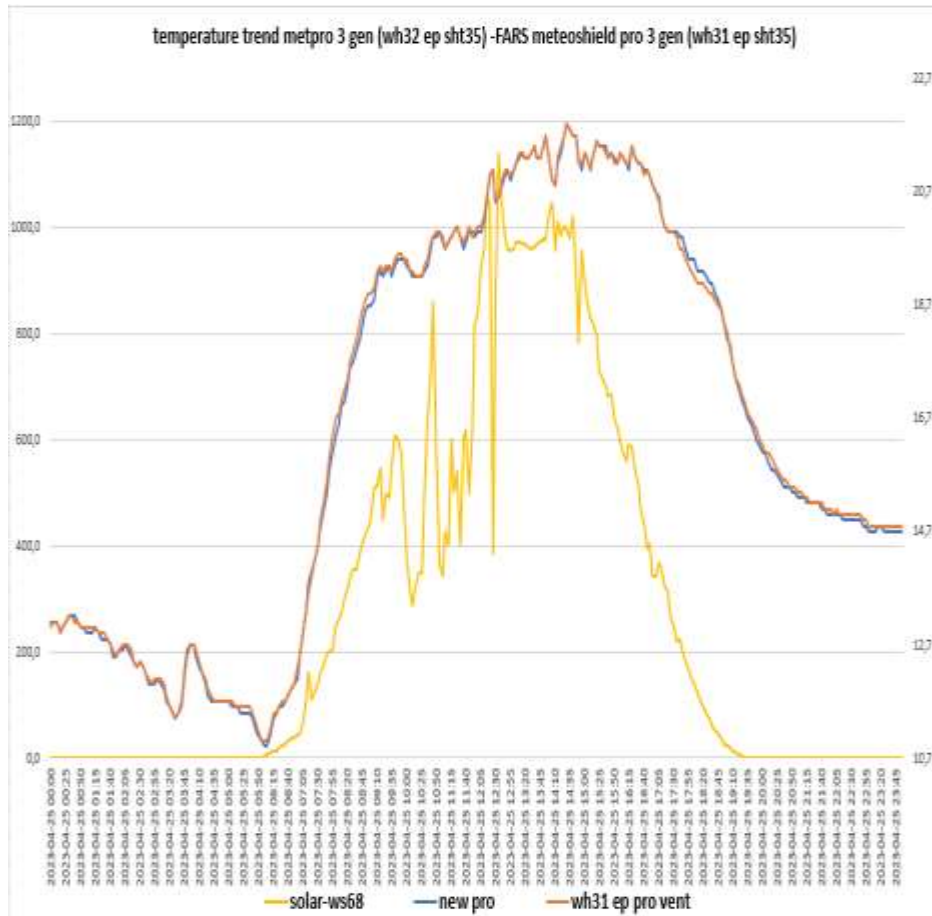


# SCREEN TREND OF 25-04-2023

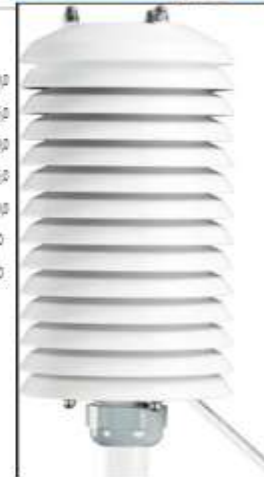
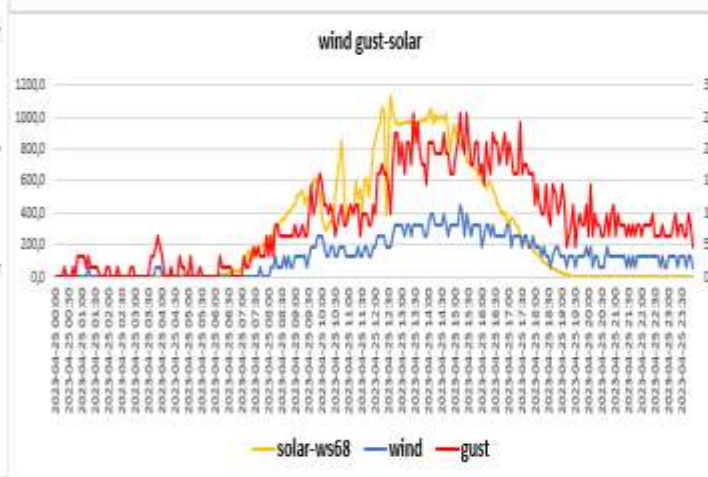
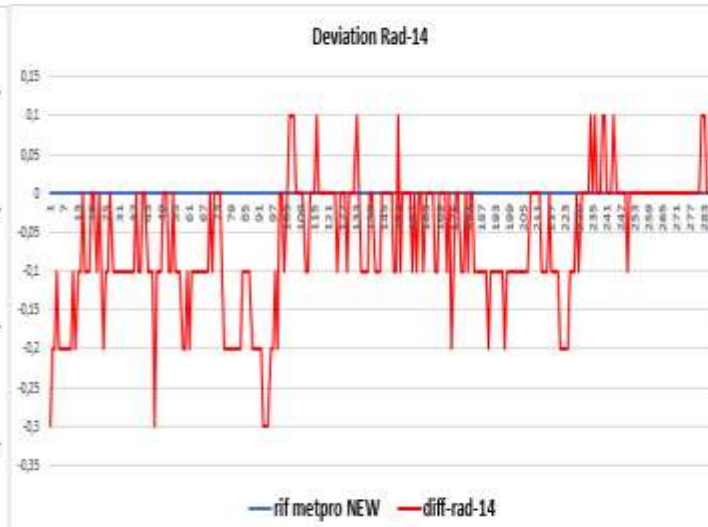
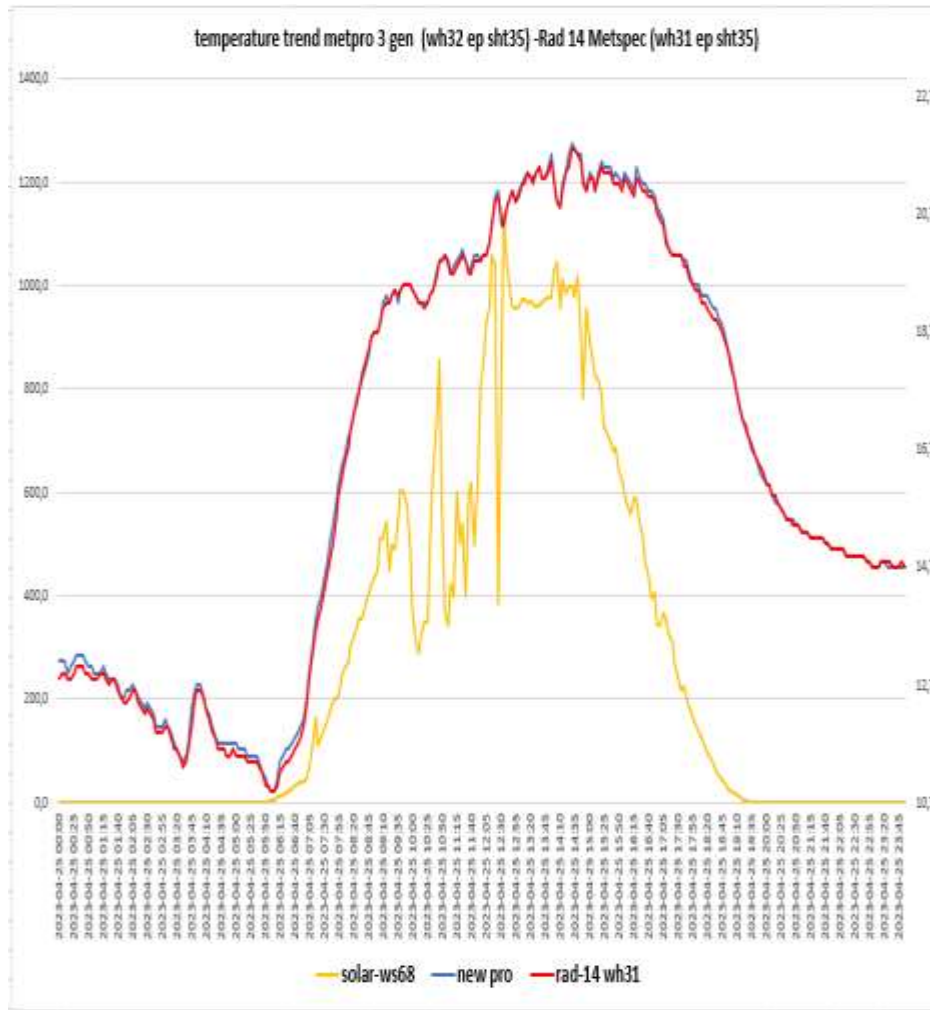
Davis vp2 pro ventilata- Metpro 3 gen (Probe sensor wh32EP ecowitt)



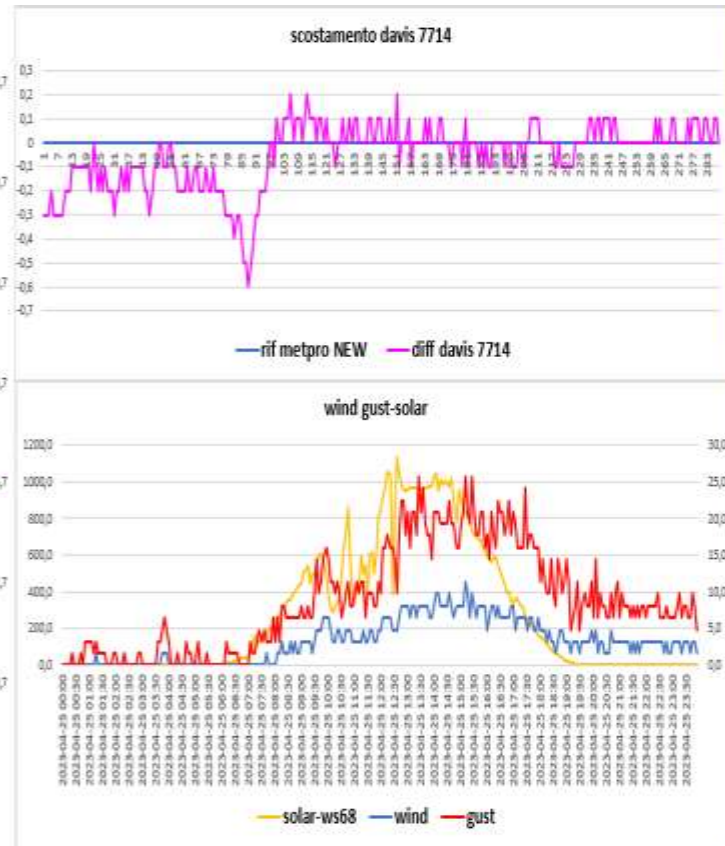
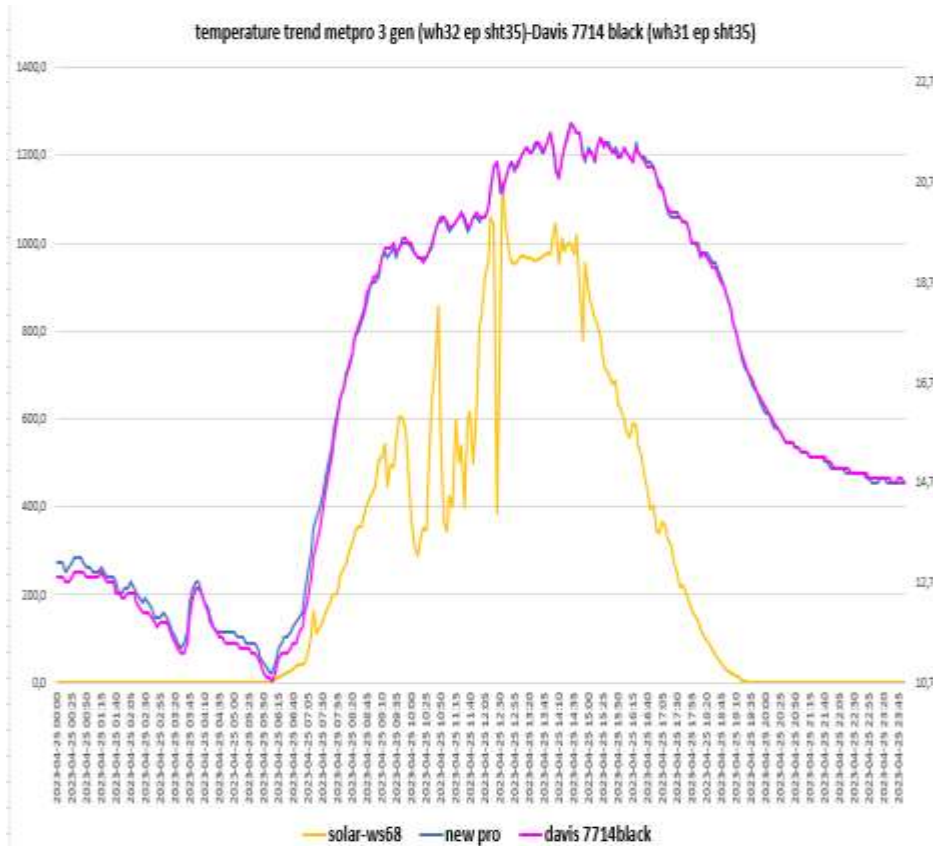
Metpro 3 gen (Probe sensor wh32EP ecowitt)- FARS meteoshield pro 3° gen (Probe sensor wh31EP ecowitt)



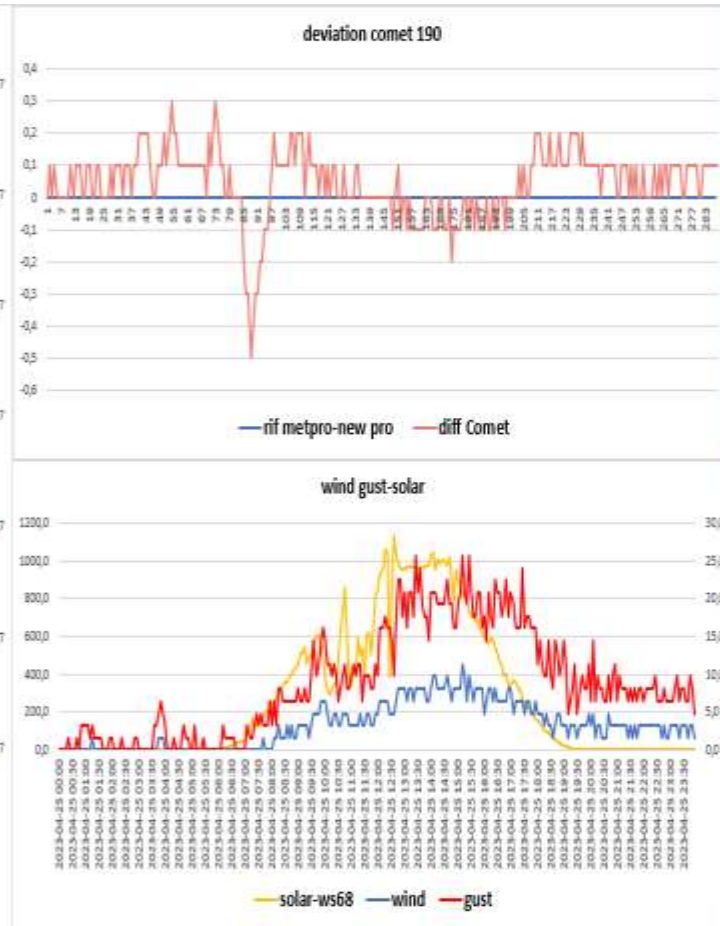
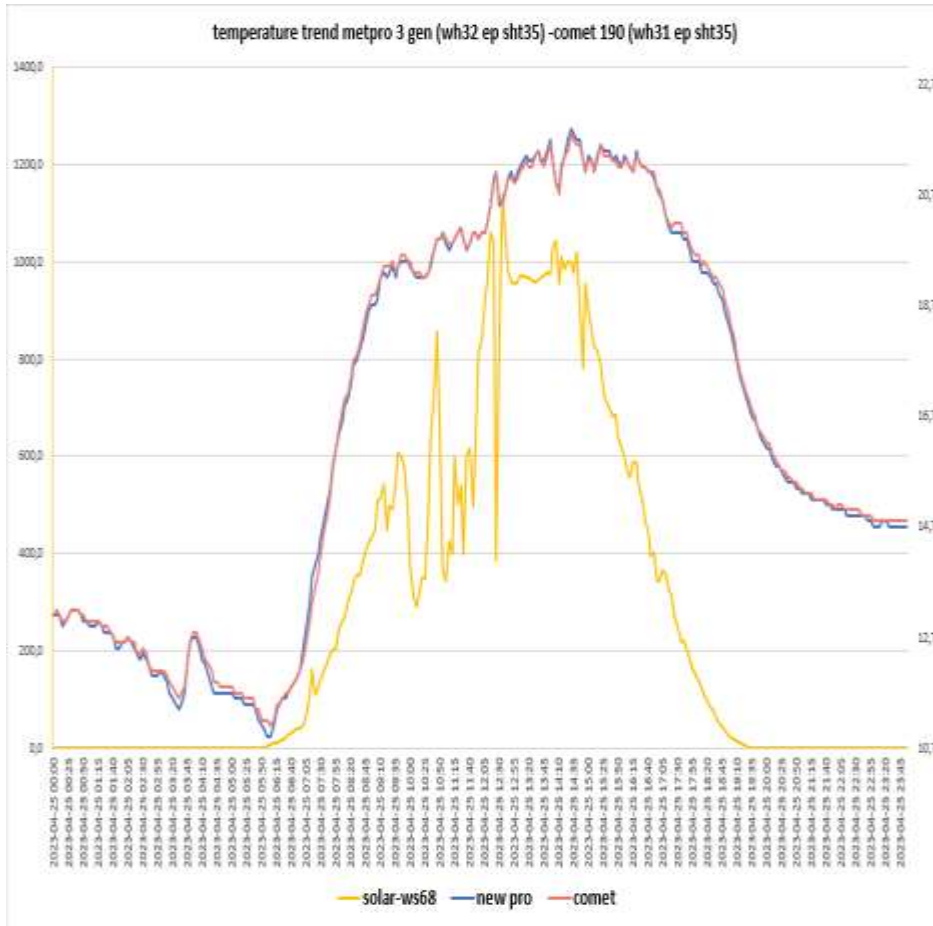
Metpro 3 gen (Probe sensor WH32 EP ecowitt) – Rad14 Metspec (Probe sensor wh31EP-WH31ep ecowitt)



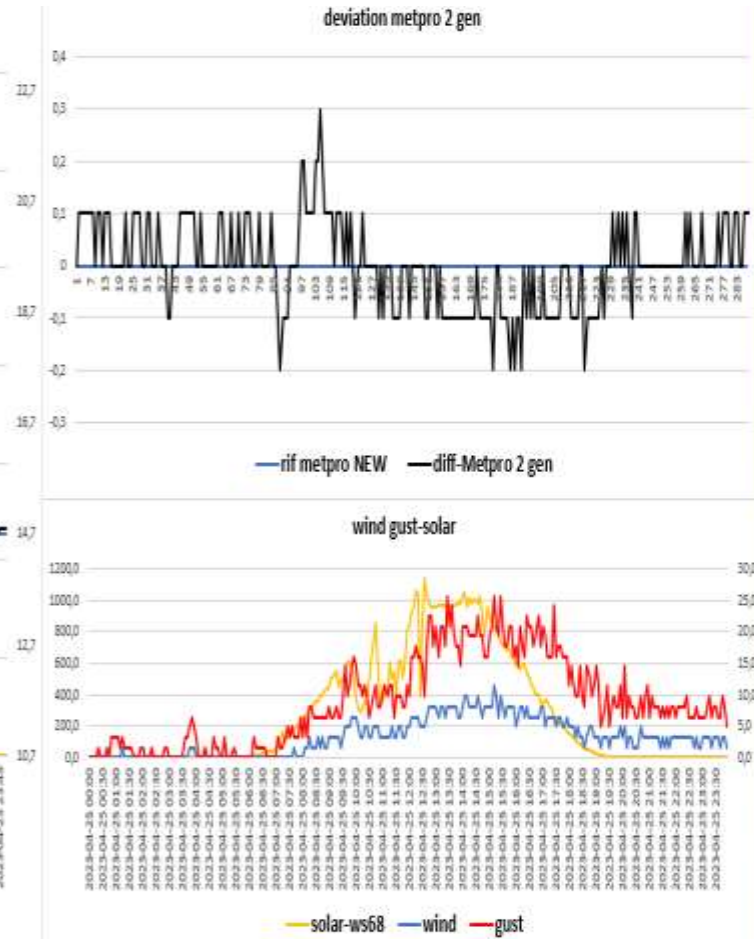
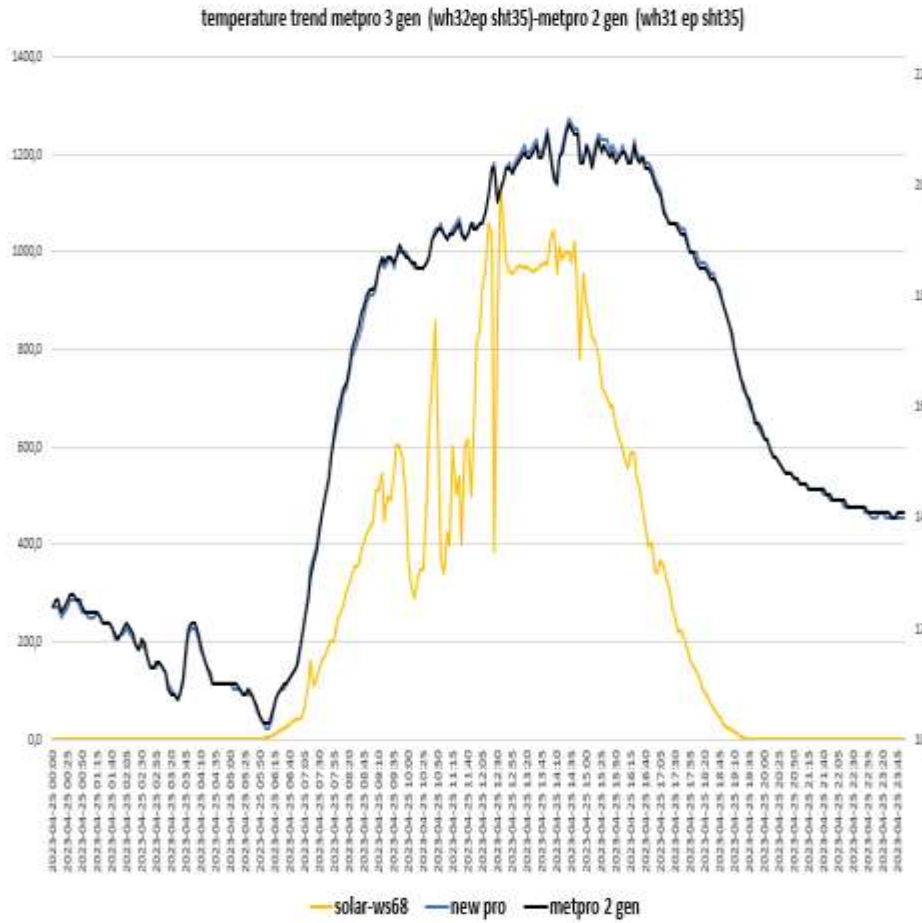
Metpro 3 gen (Probe sensor wh32 EP ecowitt)-DAVIS 7714 Black(Probe sensor wh31EP ecowitt)-



METPRO 3 GEN (probe sensor wh32 EP ecowitt)- COMET 190 (probe sensor wh31 EP)



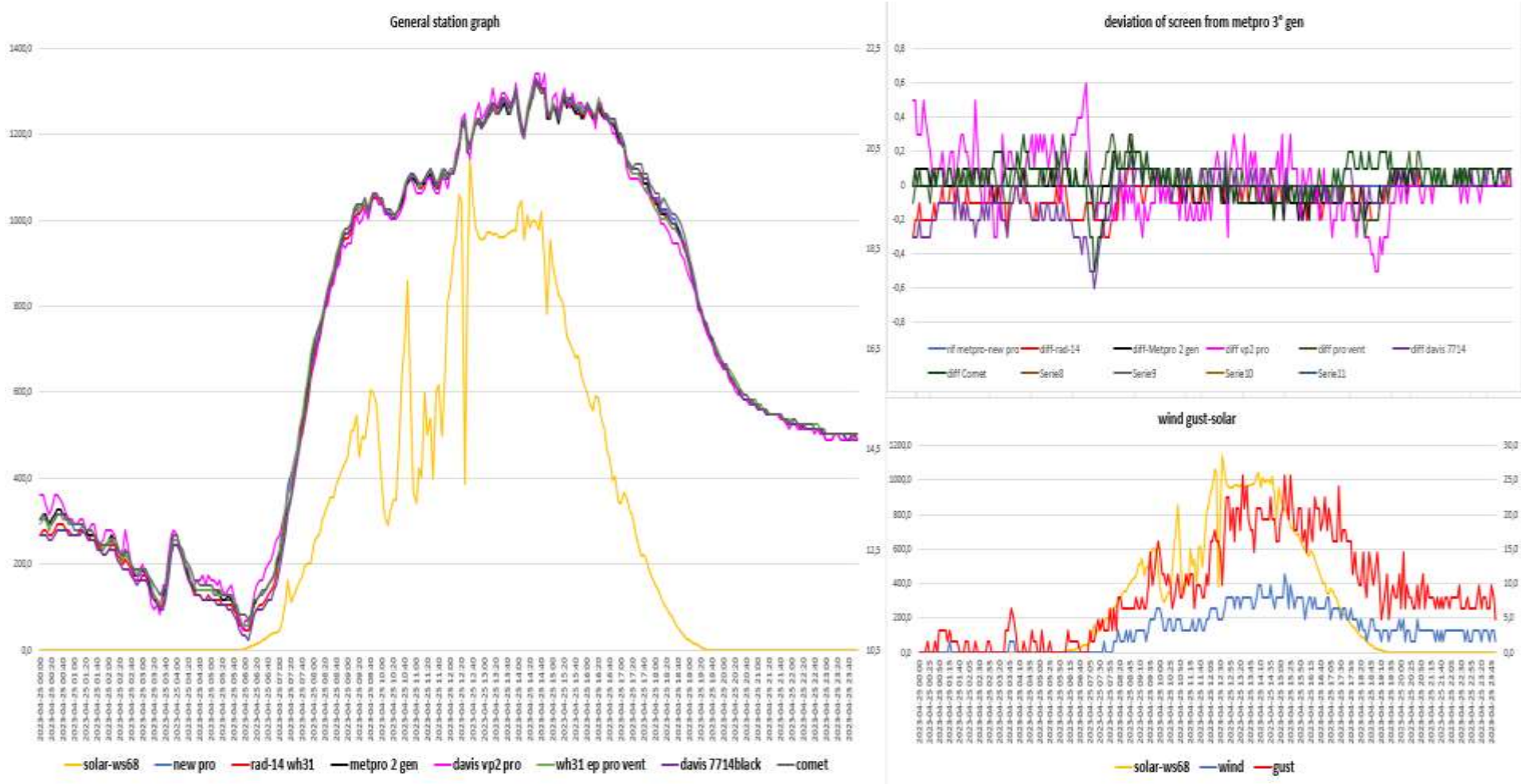
METPRO 3 GEN (probe sensor wh32EP ecowitt) -METPRO 2 GEN (probe sensor dp50 EP ecowitt)



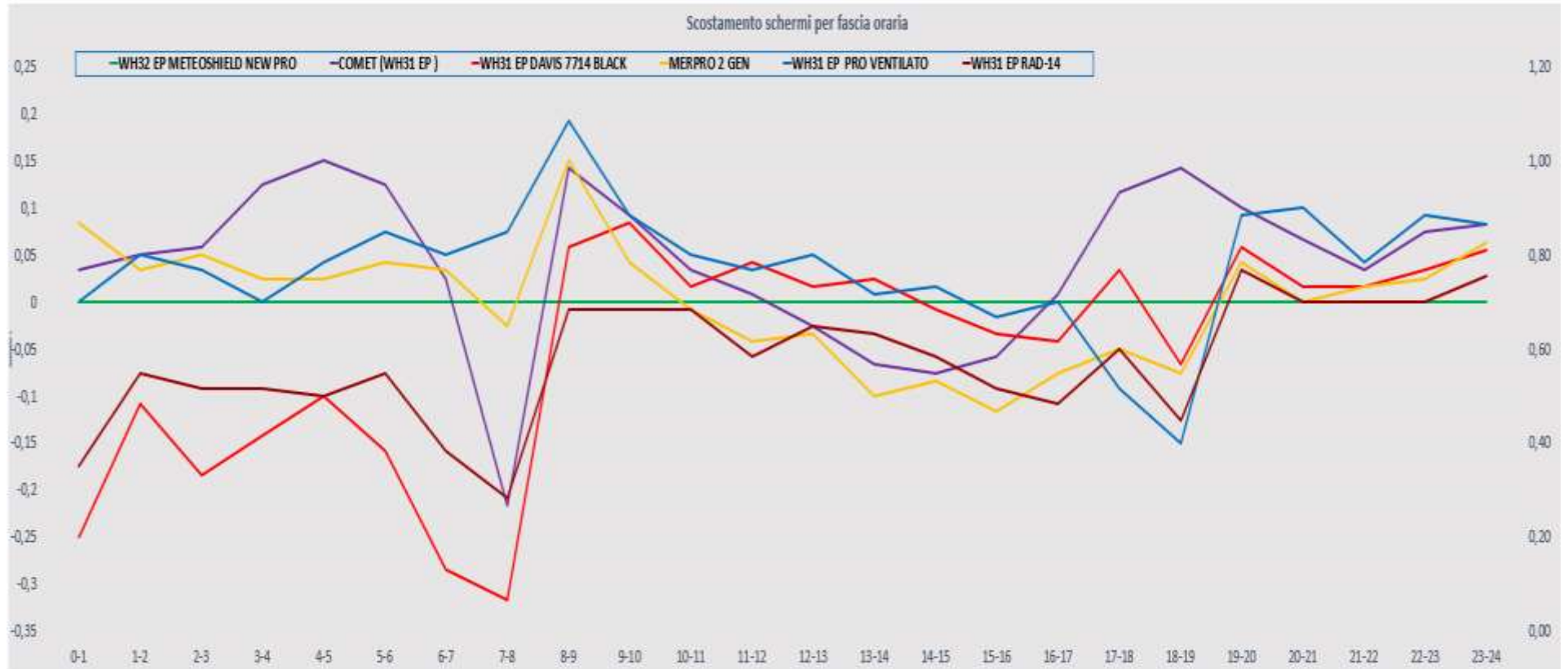
### STATISTICAL DATA (MAXIM UM MINIMUM AVERAGES)

vento medio 24H	3,2 km/h	vento medio dalle ore 08:00 alle 18:00	5,7 km/h	dalle ore 08:00 alle 18:00	scostamenti dalle ore 08:00 alle 18:00						
media met pro New	16,594			media met pro 3° gen	20,2						
max met pro New	21,9	schermo di riferimento		max met pro 3° gen	21,9						
min met pro New	10,9			min met pro 3° gen	16,4						
media davis vp2 pro vent	16,606	scost medio davis vp2 pro vent	0,01	media davis vp2 pro vent	20,2	scost medio davis vp2 pro vent	0,0	media davis7714black	20,2	scost medio davis 7714 black	0,0
max davis vp2pro vent	22	scost max davis vp2 pro vent	0,6	max davis vp2 pro vent	22,0	scost max davis vp2 pro vent	0,3	max davis7714 black	21,9	scost max davis 7714 black	0,2
min davis vp2 pro vent	10,9	scost min davis vp2 pro vent	-0,5	min davis vp2 pro vent	16,2	scost min davis vp2 pro vent	-0,3	min davis 7714 black	16,4	scost min davis 7714 black	-0,1
media rad-14	16,531	scost medio rad-14	-0,06	media Rad-14	20,2	scost medio rad-14	0,0	media comet	20,2	scost medio comet	0,0
max rad-14	21,8	scost max rad-14	0,1	max rad-14	21,8	scost max rad-14	0,1	max comet	21,8	scost max comet	0,2
min rad-14	10,9	scost min rad-14	-0,3	min Rad-14	16,2	scost min rad-14	-0,2	min comet	16,5	scost min comet	-0,2
media metpro 2 gen	16,594	scost medio Metpro 2 gen	0	media Metpro 2 gen	20,2	scost medio Metpro 2 gen	0,0	media pro ventilato	20,3	scost medio pro vent	0,0
max Metpro 2 gen	21,9	scost max Metpro 2 gen	0,3	max Metpro 2 gen	21,8	scost max Metpro 2 gen	0,3	max pro ventilato	21,9	scost max pro vent	0,3
min Metpro 2 gen	10,9	scost min Metpro 2 gen	-0,2	min Metpro 2 gen	16,6	scost min Metpro 2 gen	-0,2	min pro ventilato	16,7	scost min pro vent	-0,2
media pro ventilato	16,632	scost medio pro vent	0,04								
max pro ventilato	21,9	scost max pro vent	0,3								
min pro ventilato	11	scost min pro vent	-0,3								
media davis 7714	16,542	scost medio davis 7714	-0,05								
max davis 7714	21,9	scost max davis 7714	0,2								
min davis 7714	10,7	scost min davis 7714	-0,6								

# general summary



### screen shift by time slot



**RAIN 24h**

<b>Pluviometro ,manuale TFA</b>	<b>0.0 mm</b>
<b>Pluviometro vp2 pro</b>	<b>0,0 mm</b>
<b>Pluviometro wh40 ecowitt suolo</b>	<b>0,0mm</b>
<b>Meteorain Barani</b>	<b>0,0 mm</b>
<b>Pluviometro gw1001 ecowitt</b>	<b>0,0 mm</b>

### ground temperature-leaf wetness-Pressure

