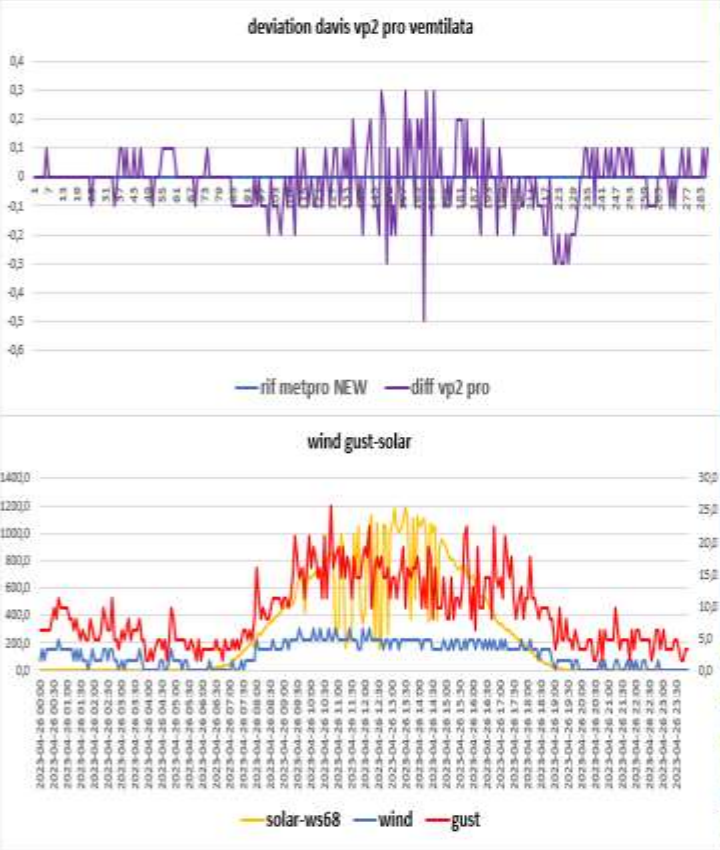
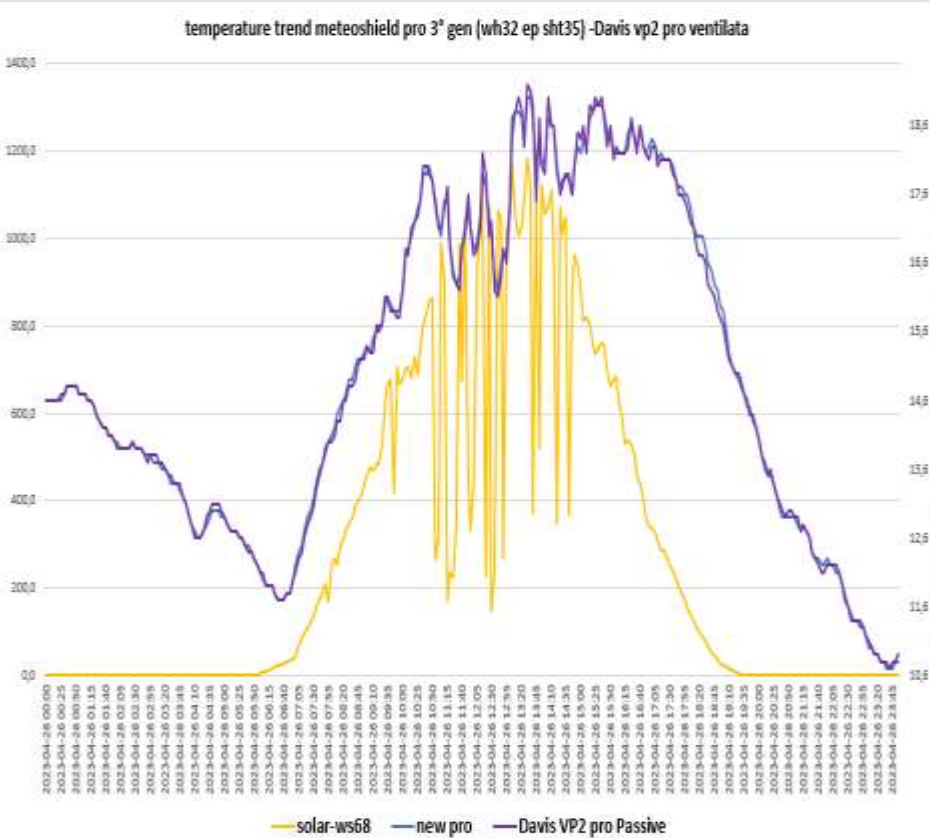


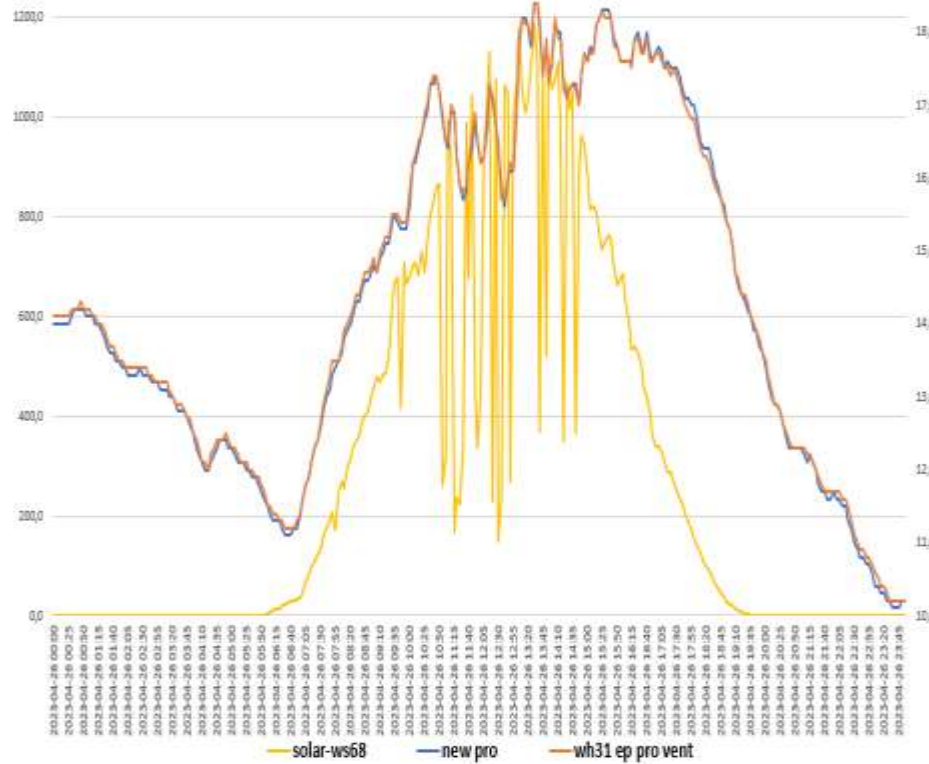
# SCREEN TREND OF 26-04-2023

Davis vp2 pro ventilata- Metpro 3 gen (Probe sensor wh32EP ecowitt)

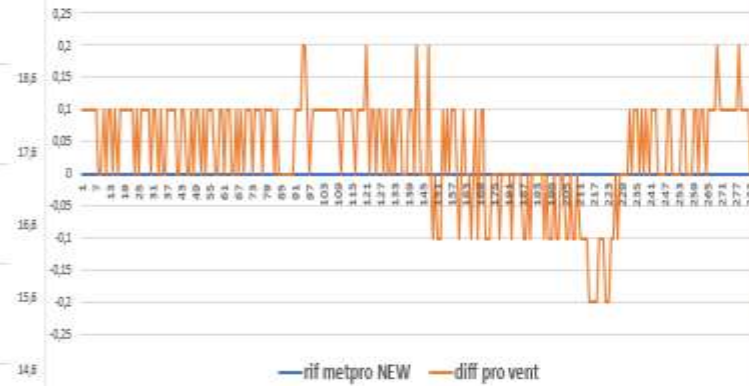


## Metpro 3 gen (Probe sensor wh32EP ecowitt)- FARS meteoshield pro 3° gen (Probe sensor wh31EP ecowitt)

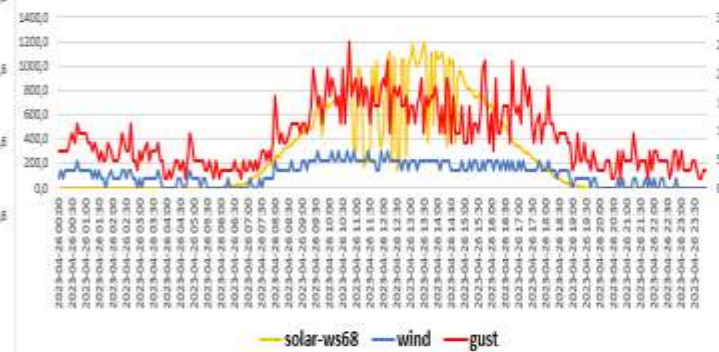
temperature trend metpro 3 gen (wh32 ep sht35)-FARS meteoshield pro 3 gen (wh31 ep sht35)



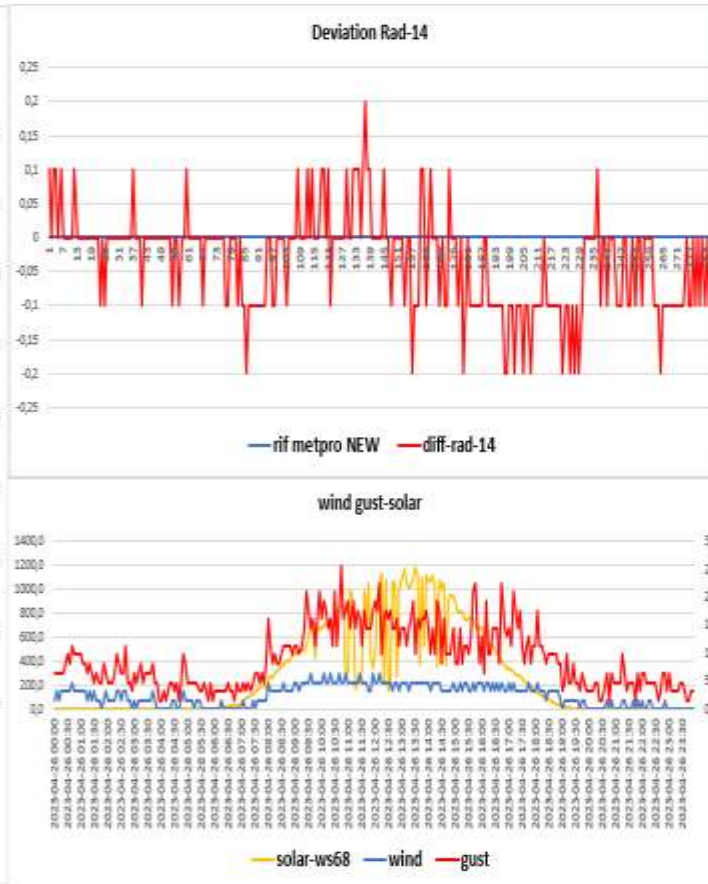
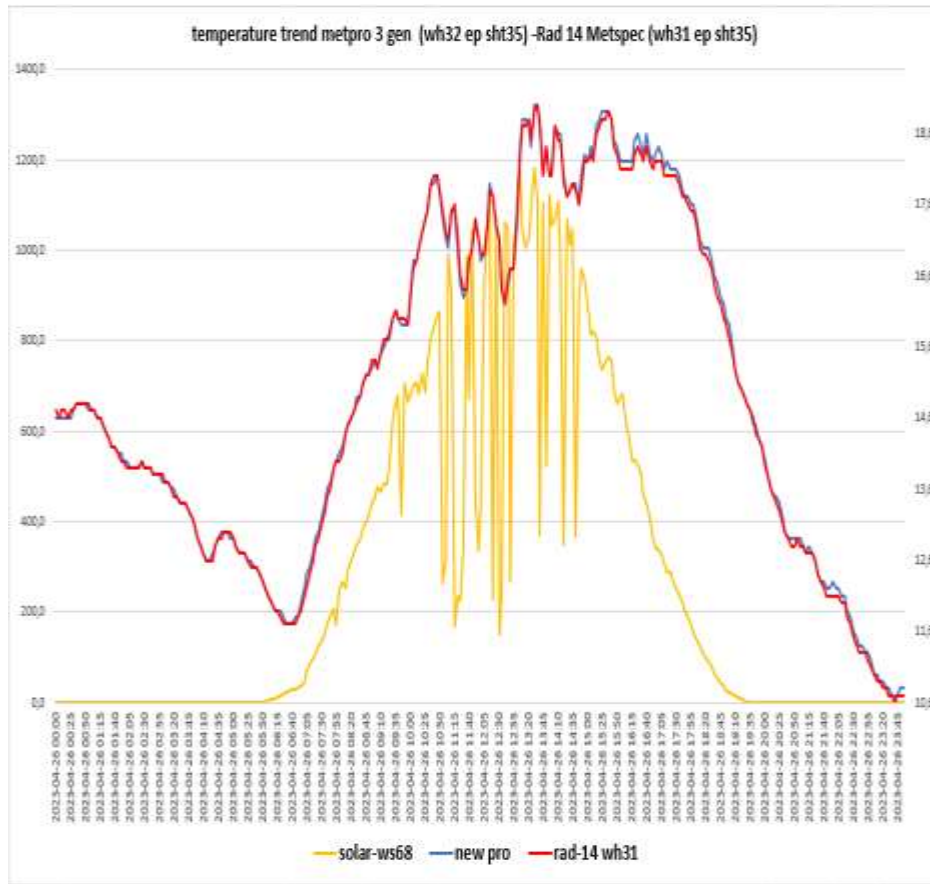
deviation FARS Meteoshield Pro -meteoshield pro 3° generazione



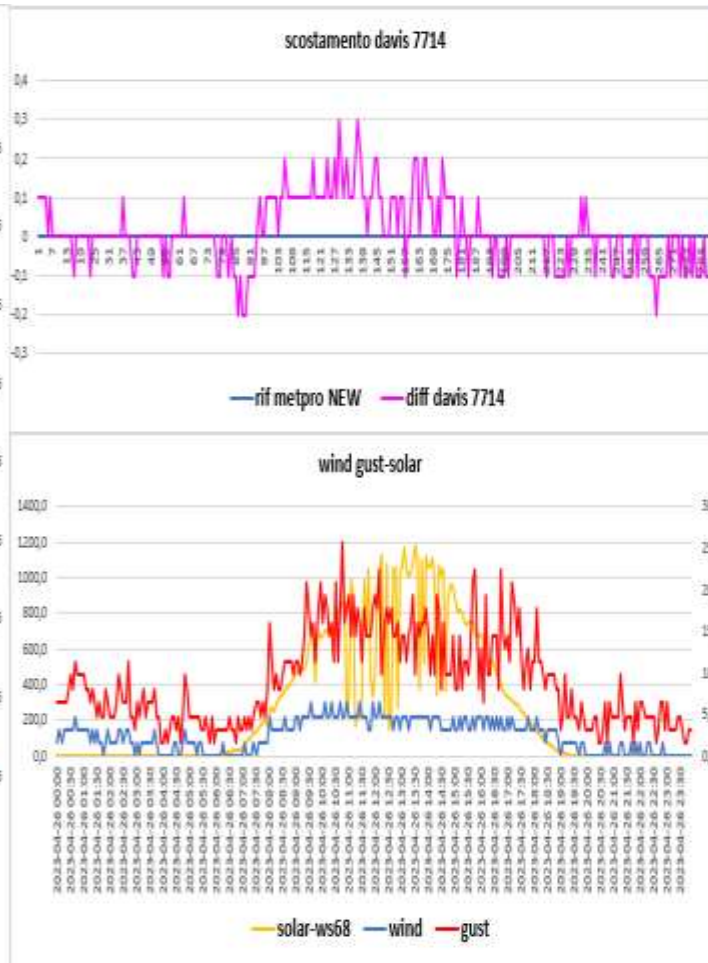
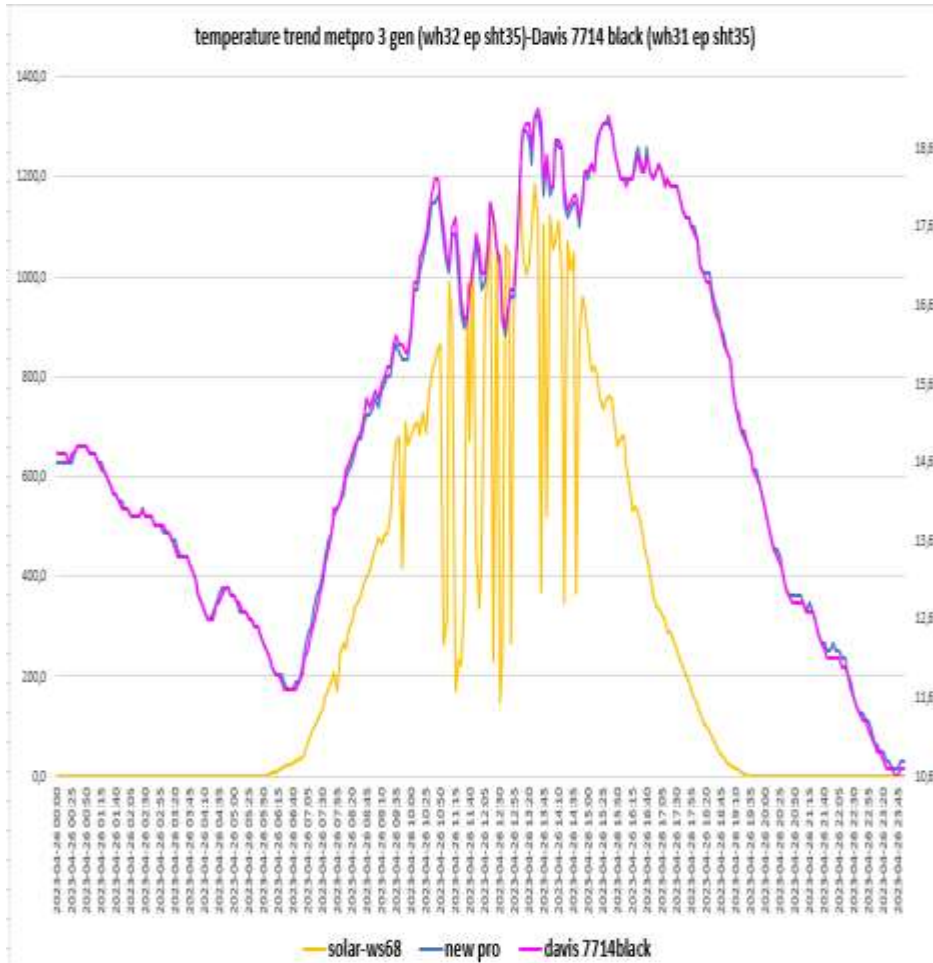
wind gust-solar



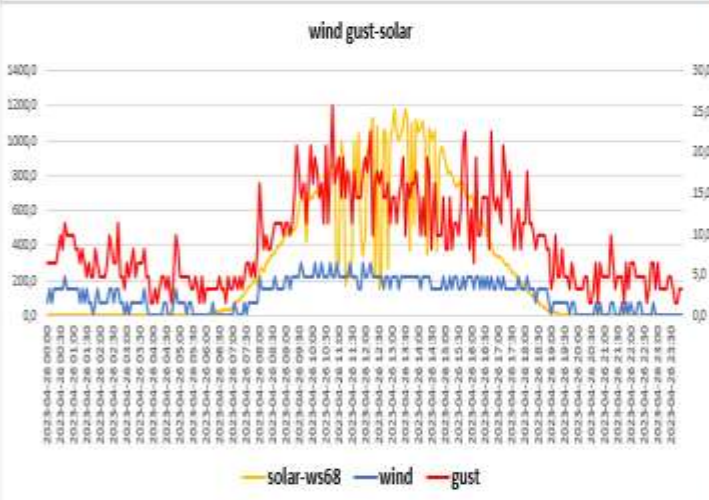
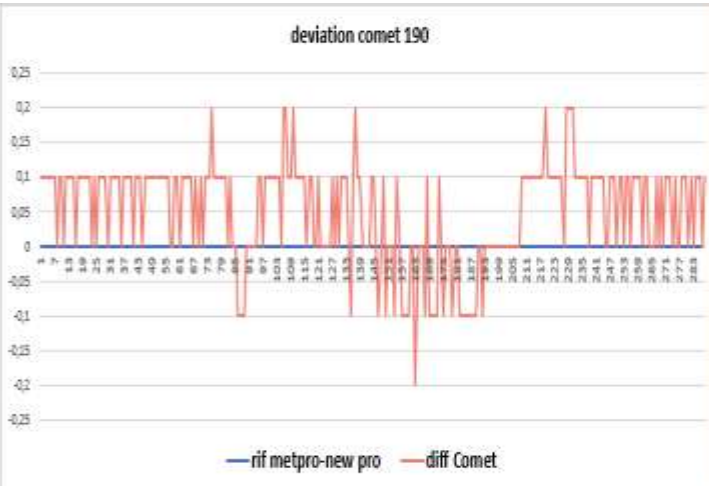
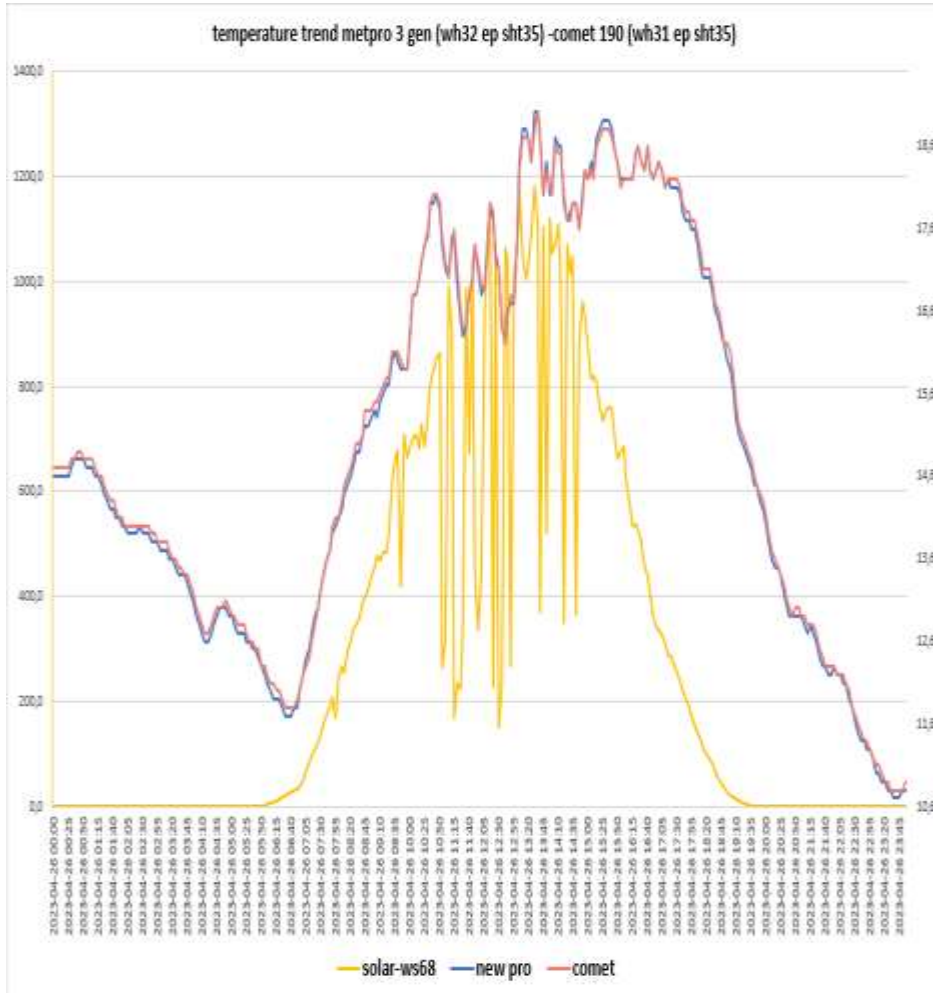
Metpro 3 gen (Probe sensor WH32 EP ecowitt) – Rad14 Metspec (Probe sensor wh31EP-WH31ep ecowitt)



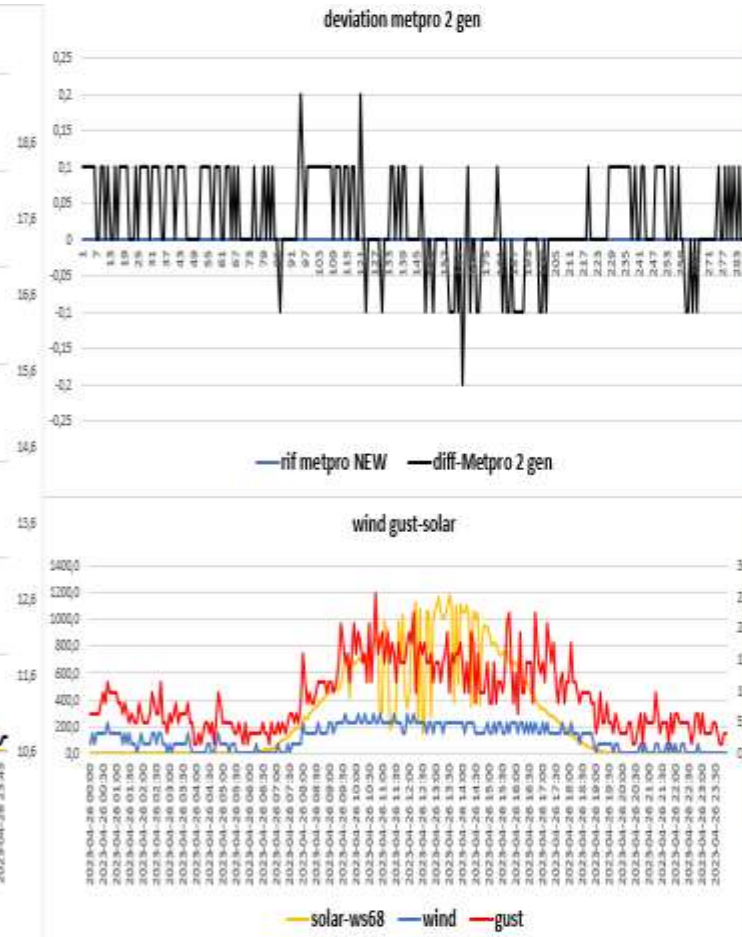
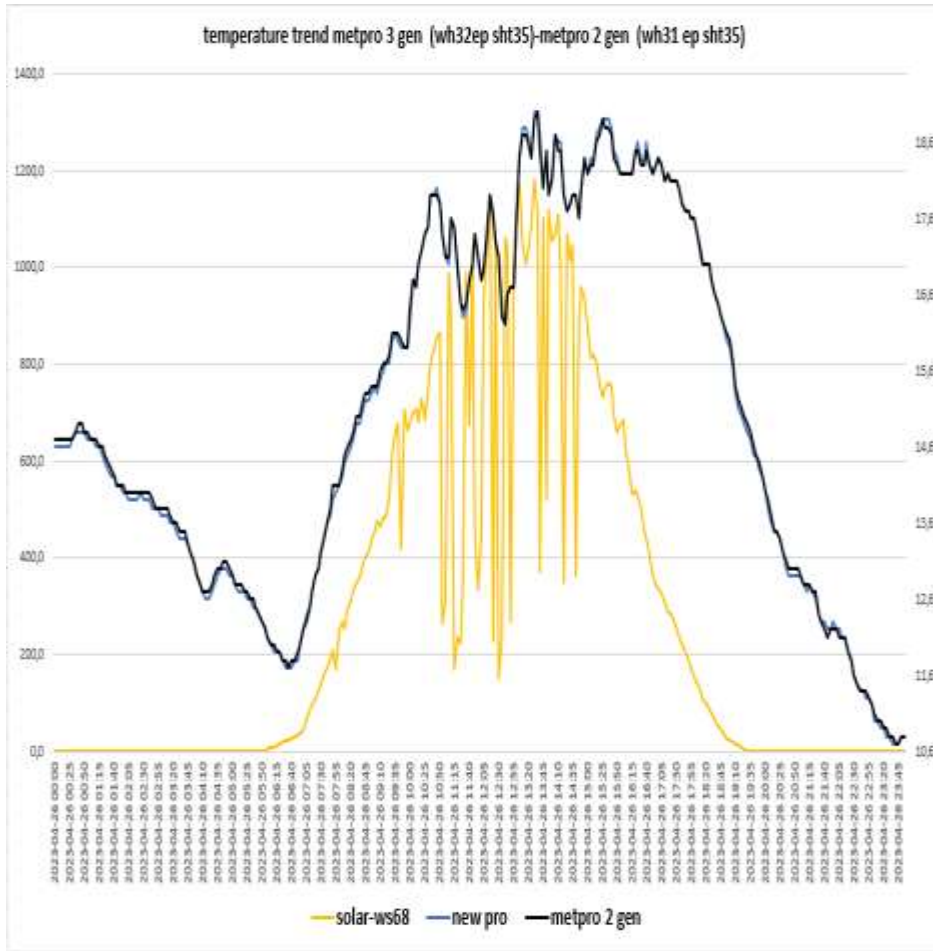
Metpro 3 gen (Probe sensor wh32 EP ecowitt)-DAVIS 7714 Black(Probe sensor wh31EP ecowitt)-



METPRO 3 GEN (probe sensor wh32 EP ecowitt)- COMET 190 (probe sensor wh31 EP)



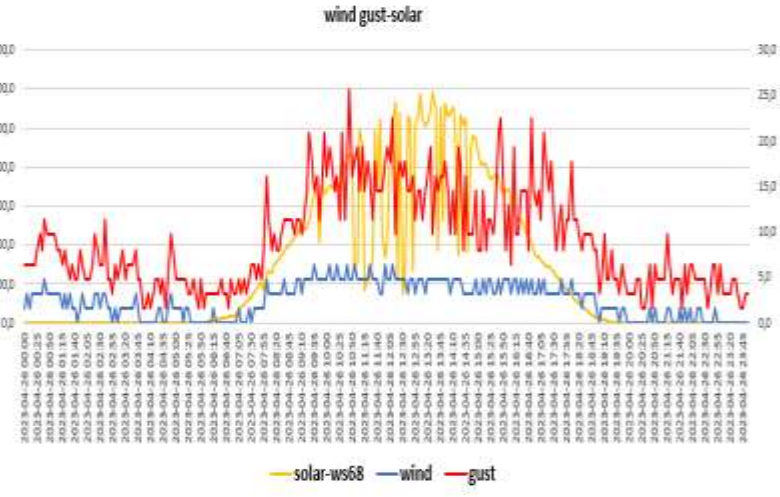
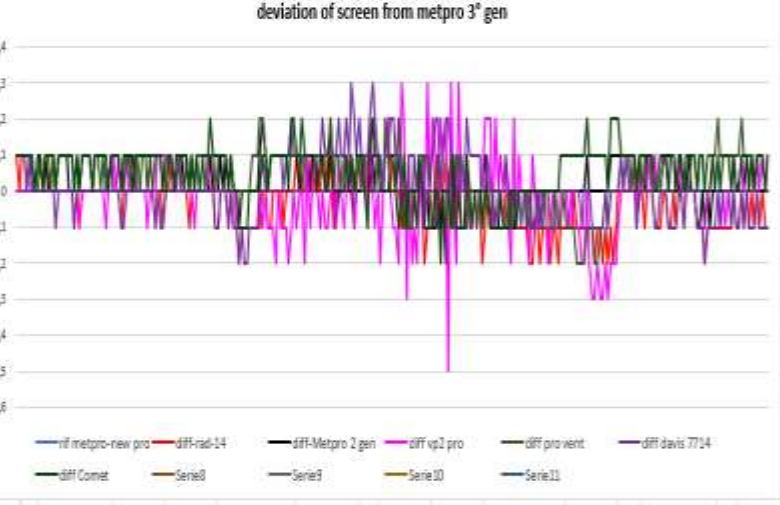
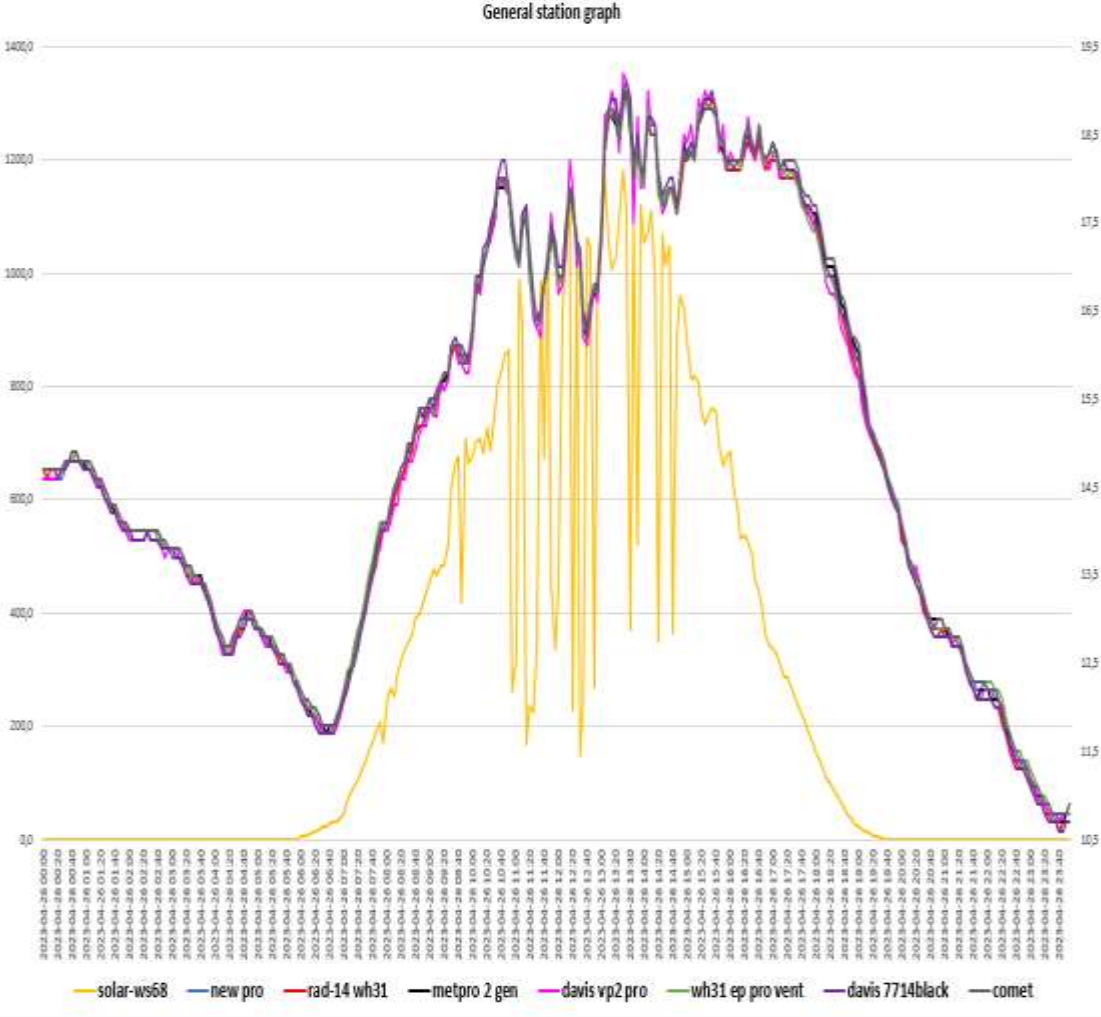
METPRO 3 GEN (probe sensor wh32EP ecowitt) -METPRO 2 GEN (probe sensor dp50 EP ecowitt)



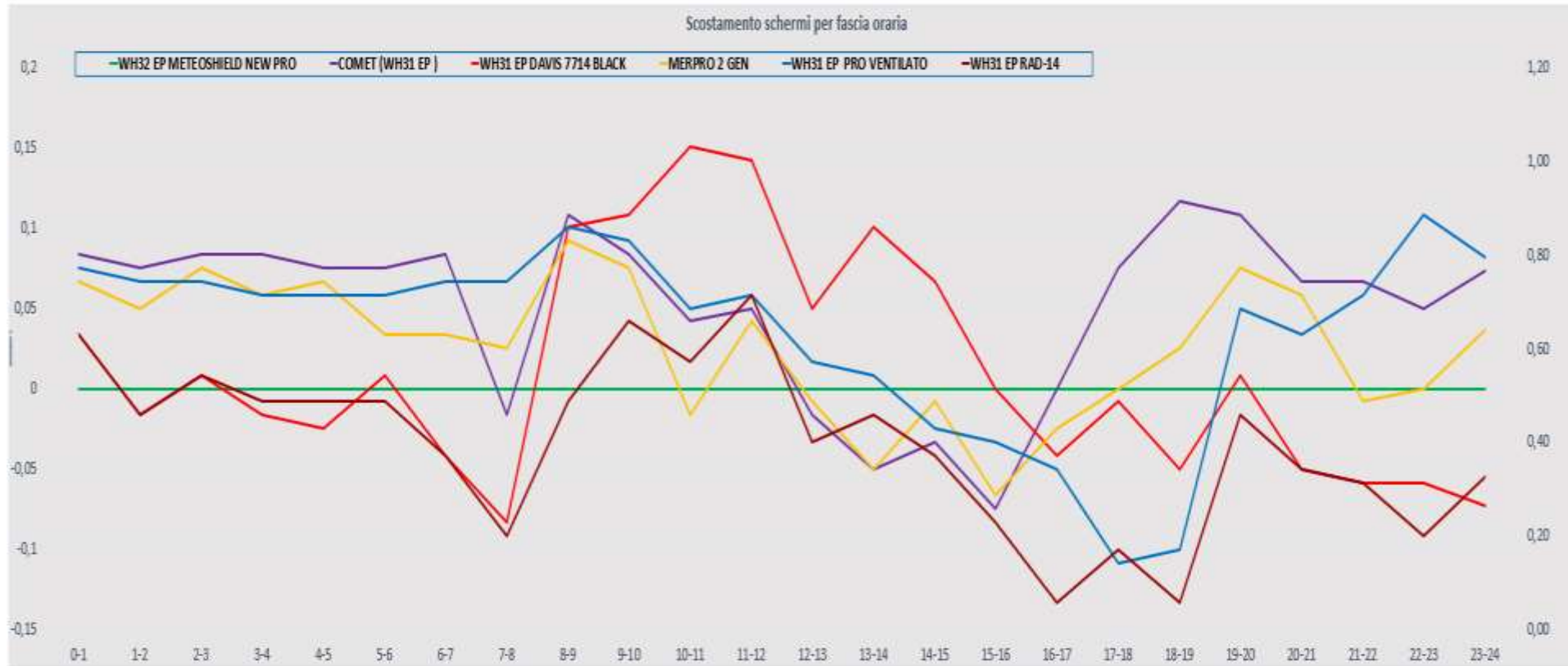
### STATISTICAL DATA (MAXIM UM MINIMUM AVERAGES)

vento medio 24H	2,5 km/h	vento medio dalle ore 08:00 alle 18:00	4,3 km/h	dalle ore 08:00 alle 18:00	scostamenti dalle ore 08:00 alle 18:00						
media met pro New	15,006			media met pro 3° gen	17,3						
max met pro New	19	schermo di riferimento		max met pro 3° gen	19,0						
min met pro New	10,7			min met pro 3° gen	14,1						
media davis vp2 pro vent	14,992	scost medio davis vp2 pro vent	-0,01	media davis vp2 pro vent	17,3	scost medio davis vp2 pro vent	0,0	media davis7714black	17,4	scost medio davis 7714 black	0,1
max davis vp2pro vent	19,2	scost max davis vp2 pro vent	0,3	max davis vp2 pro vent	19,2	scost max davis vp2 pro vent	0,3	max davis7714 black	19,1	scost max davis 7714 black	0,3
min davis vp2 pro vent	10,7	scost min davis vp2 pro vent	-0,5	min davis vp2 pro vent	14,0	scost min davis vp2 pro vent	-0,5	min d s 7714 black	14,1	scost min davis 7713 black	-0,1
media rad-14	14,972	scost medio rad-14	-0,03	media Rad-14	17,3	scost medio rad-14	0,0	media comet	17,3	scost medio comet	0,0
max rad-14	19	scost max rad-14	0,2	max rad-14	19,0	scost max rad-14	0,2	max comet	19,0	scost max comet	0,2
min rad-14	10,6	scost min rad-14	-0,2	min Rad-14	14,0	scost min rad-14	-0,2	min comet	14,1	scost min comet	-0,2
media metpro 2 gen	15,006	scost medio Metpro 2 gen	0,03	media Metpro 2 gen	17,3	scost medio Metpro 2 gen	0,0	media pro ventilato	17,3	scost medio pro vent	0,0
max Metpro 2 gen	19	scost max Metpro 2 gen	0,2	max Metpro 2 gen	19,0	scost max Metpro 2 gen	0,2	max pro ventilato	19,0	scost max pro vent	0,2
min Metpro 2 gen	10,7	scost min Metpro 2 gen	-0,2	min Metpro 2 gen	14,1	scost min Metpro 2 gen	-0,2	min pro ventilato	14,1	scost min pro vent	-0,2
media pro ventilato	15,042	scost medio pro vent	0,04								
max pro ventilato	19	scost max pro vent	0,2								
min pro ventilato	10,8	scost min pro vent	-0,2								
media davis 7714	15,017	scost medio davis 7714	0,01								
max davis 7714	19,1	scost max davis 7714	0,3								
min davis 7714	10,6	scost min davis 7714	-0,2								

# general summary



### screen shift by time slot



**RAIN 24h**

<b>Pluviometro ,manuale TFA</b>	<b>0.0 mm</b>
<b>Pluviometro vp2 pro</b>	<b>0,0 mm</b>
<b>Pluviometro wh40 ecowitt suolo</b>	<b>0,0mm</b>
<b>Meteorain Barani</b>	<b>0,0 mm</b>
<b>Pluviometro gw1001 ecowitt</b>	<b>0,0 mm</b>

ground temperature-leaf wetness-Pressure

