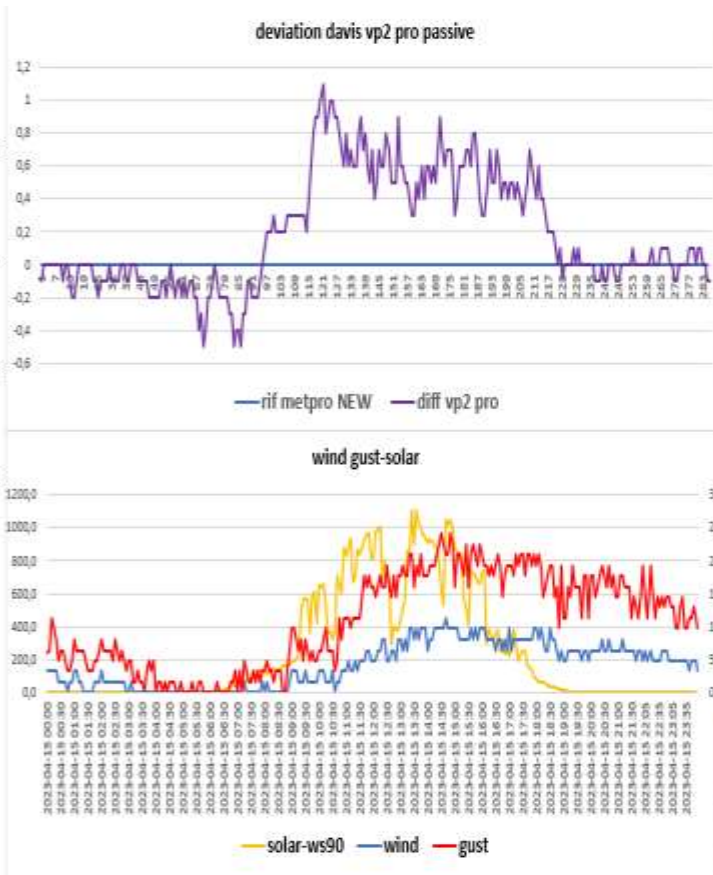
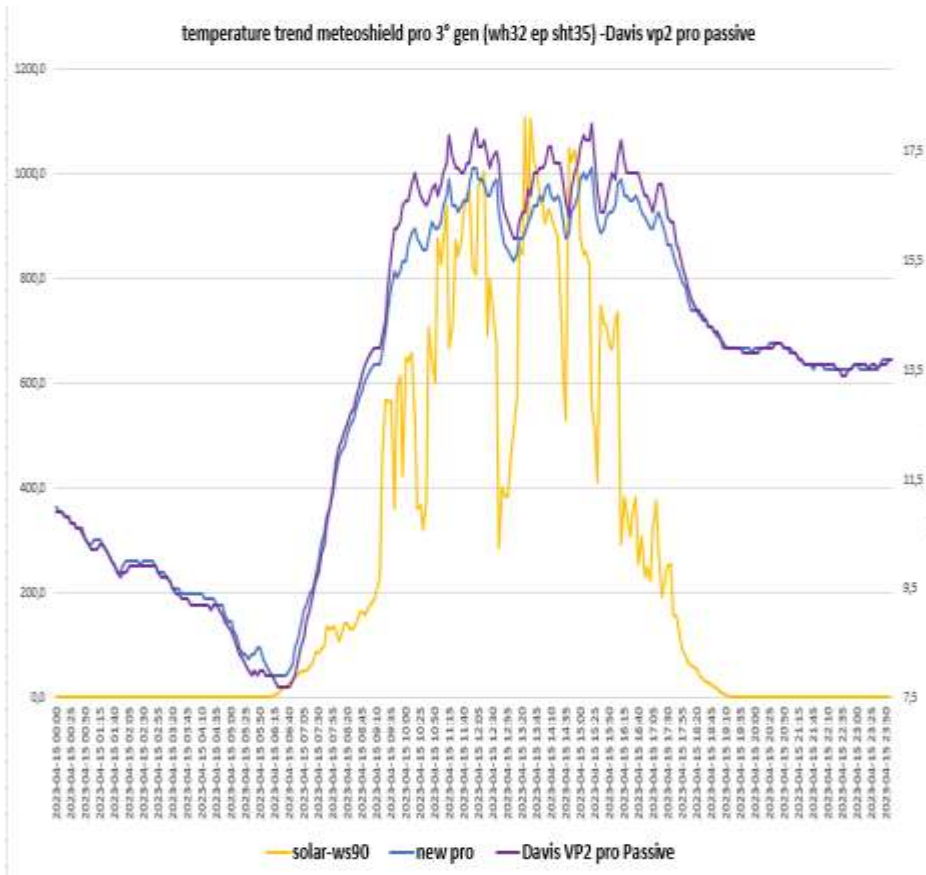
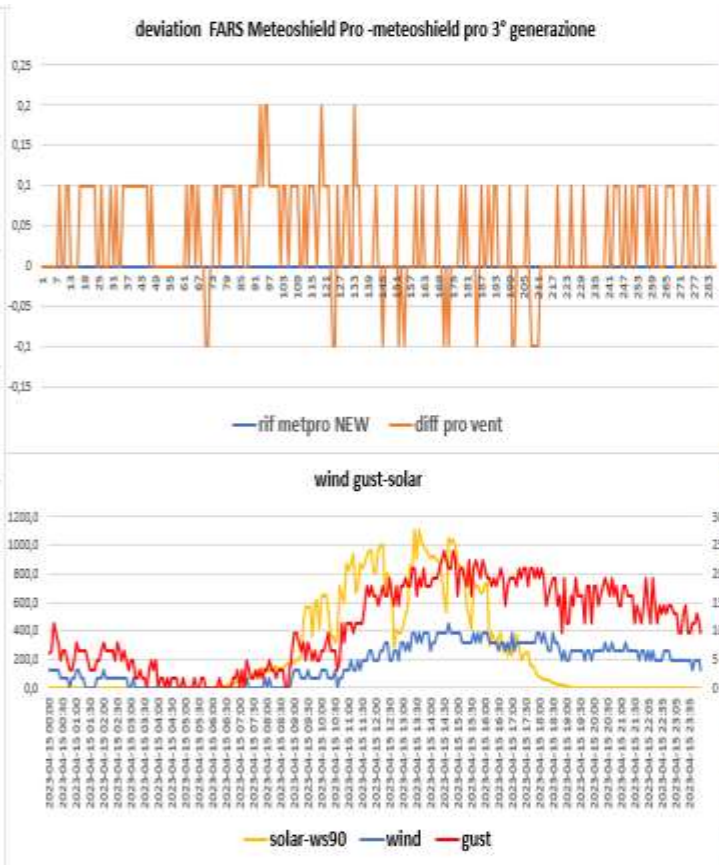
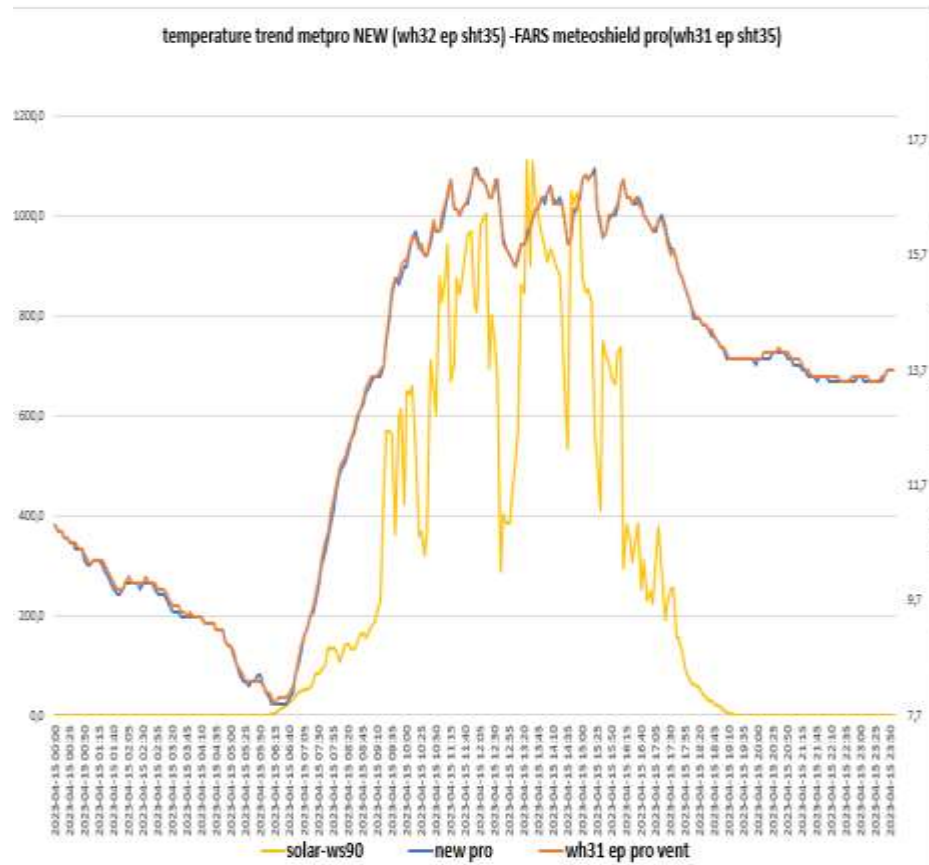


SCREEN TREND OF 15-04-2023

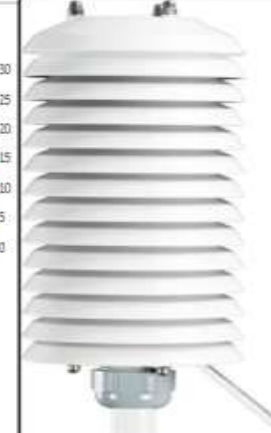
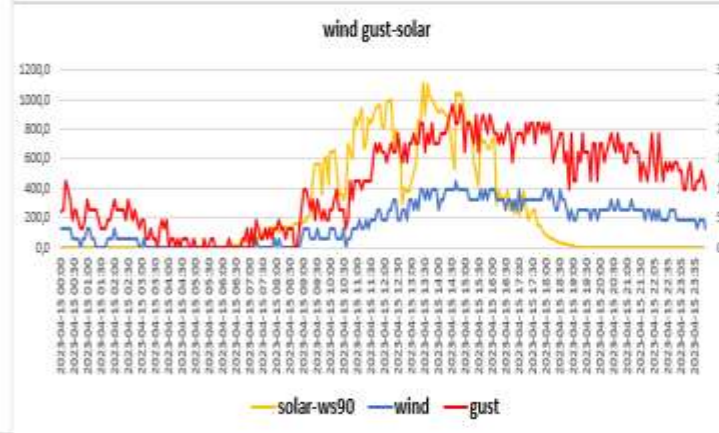
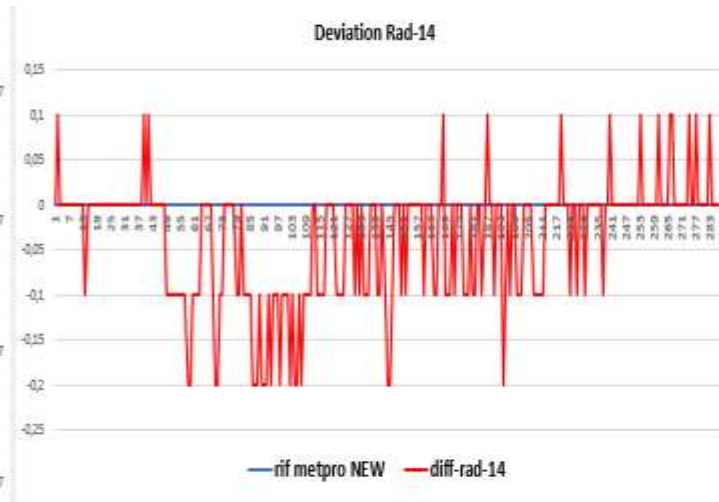
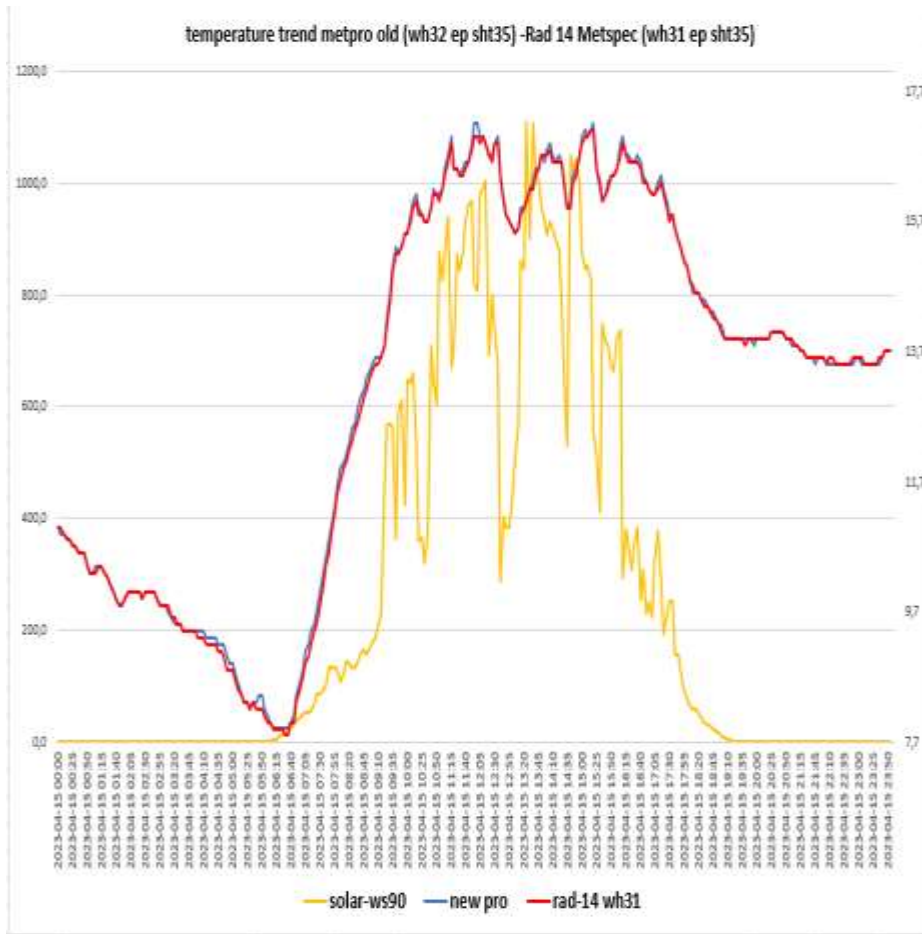
Davis vp2 pro- Metpro old (Probe sensor wh32EP ecowitt)



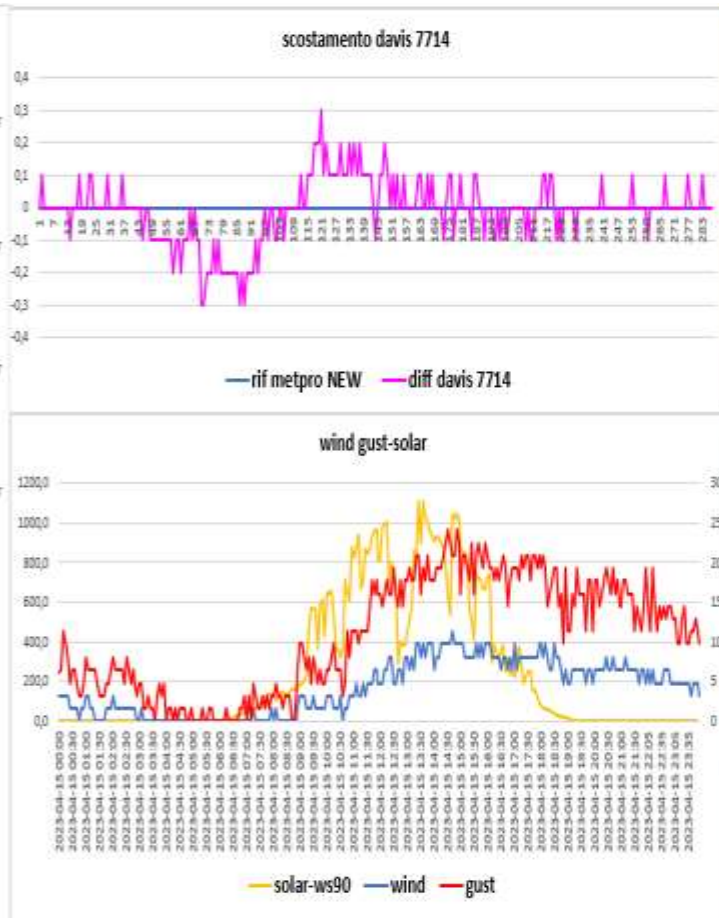
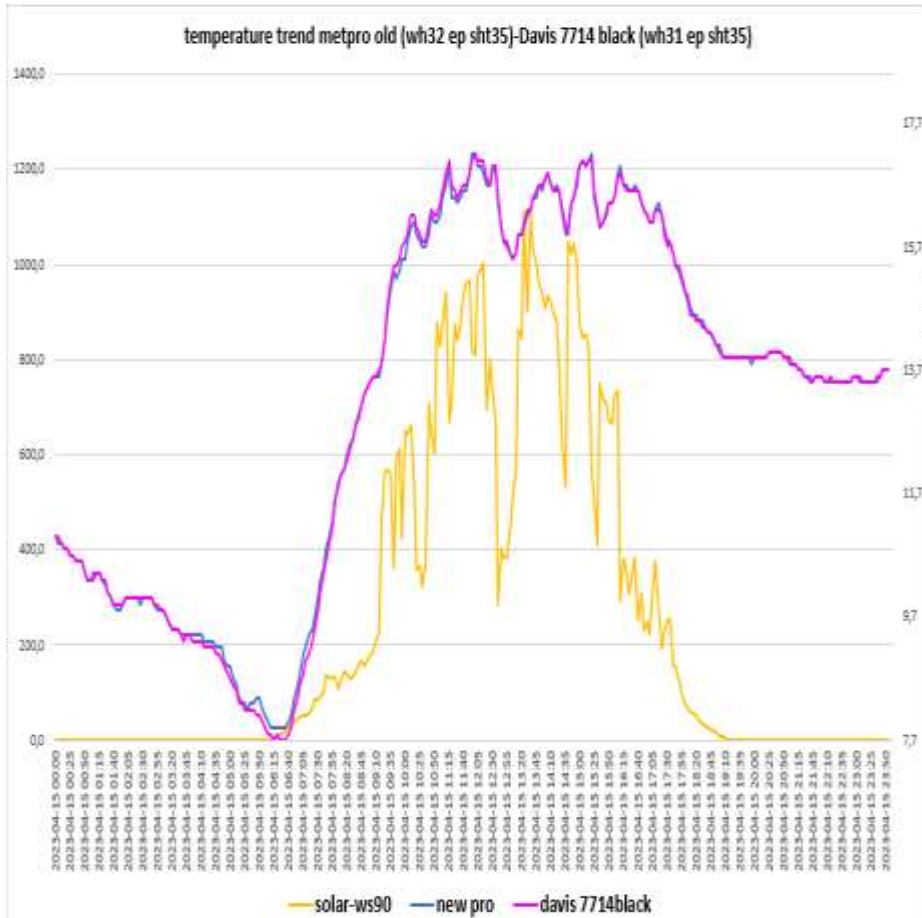
Metpro NEW (Probe sensor wh32EP ecowitt)- FARS meteoshield pro 3° gen (Probe sensor wh31EP ecowitt)



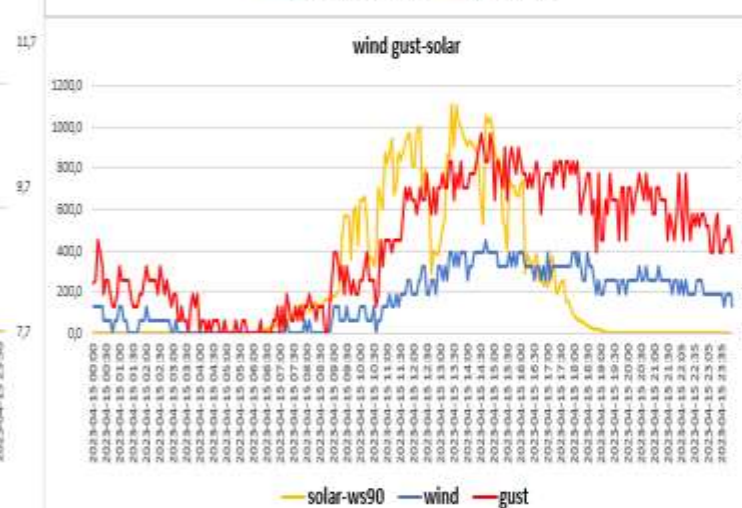
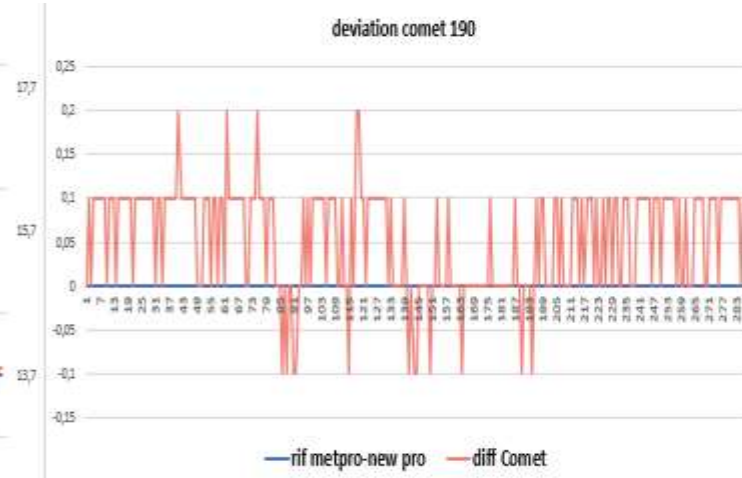
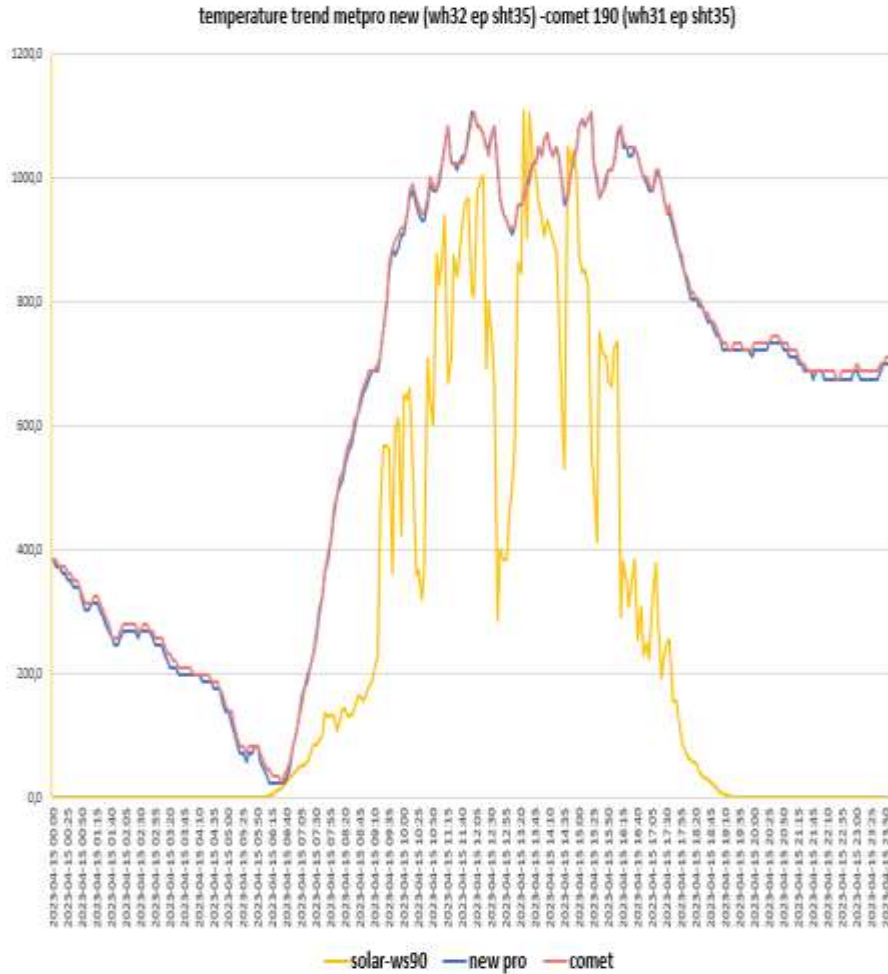
Metpro NEW (Probe sensor WH32 EP ecowitt) – Rad14 Metspec (Probe sensor wh31EP-WH31ep ecowitt)



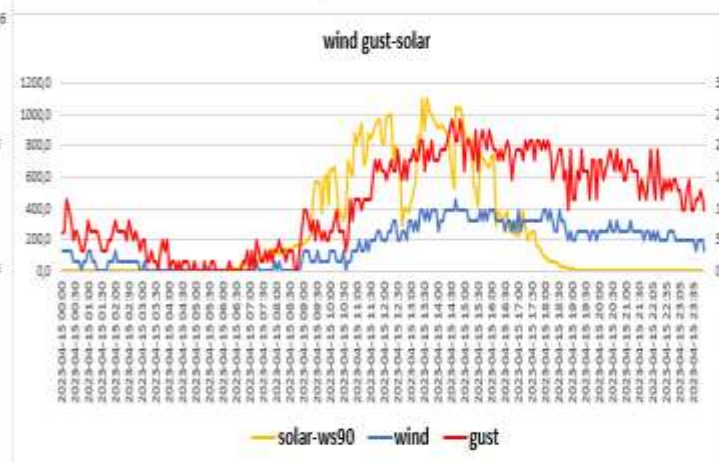
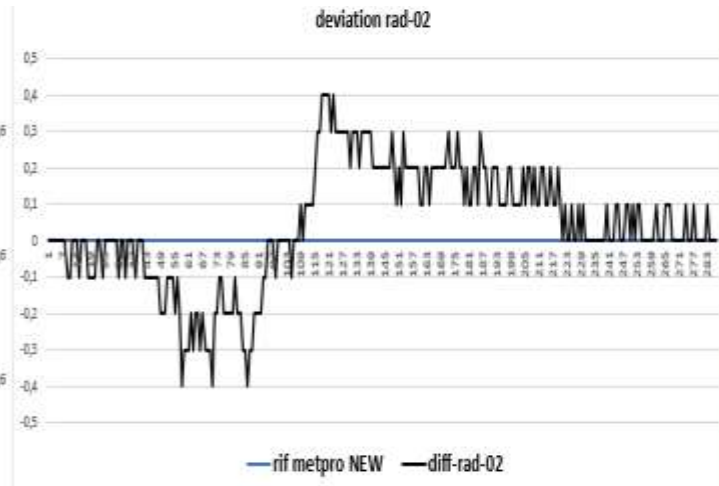
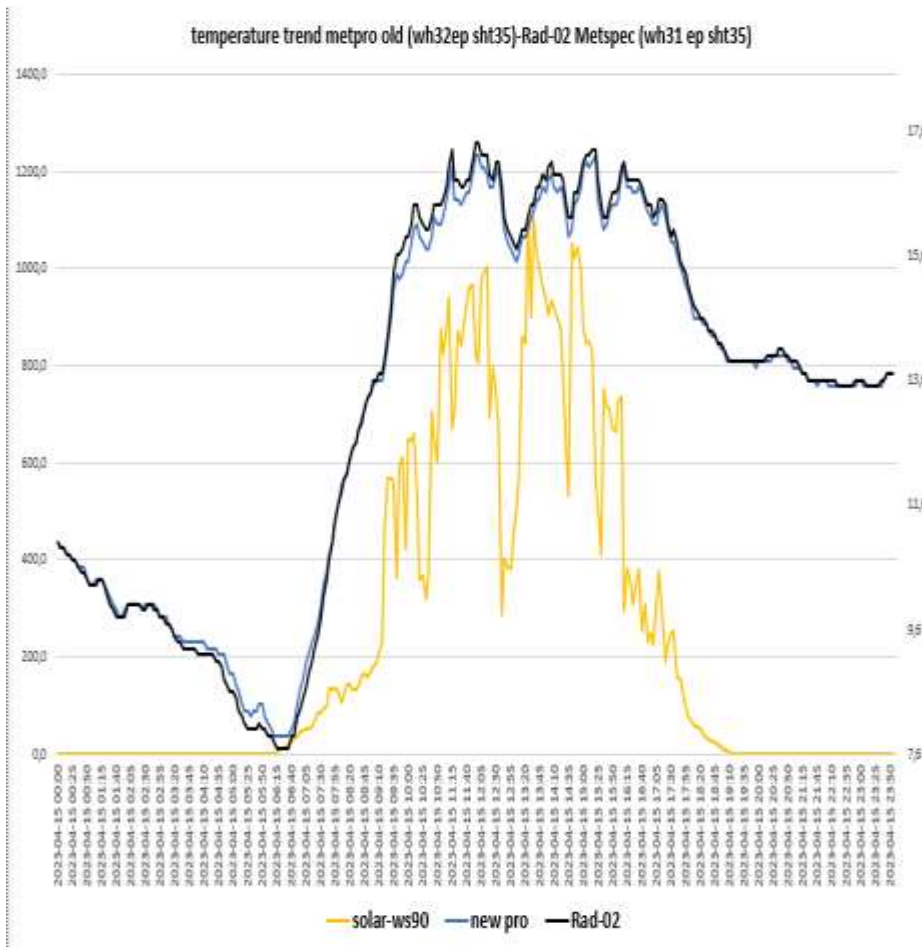
Metpro NEW (Probe sensor wh32 EP ecowitt)-DAVIS 7714 Black(Probe sensor wh31EP ecowitt)-



NEW PRO BARANI (probe sensor wh31 EP ecowitt)- COMET 190 probe sensor wh32 EP



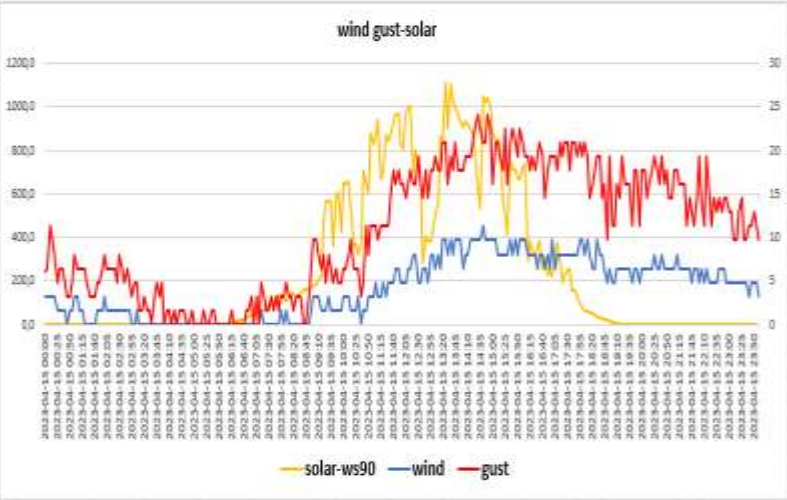
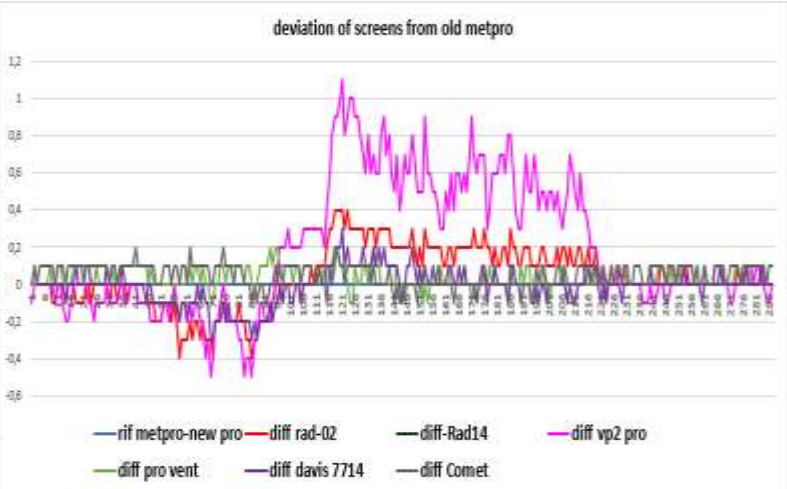
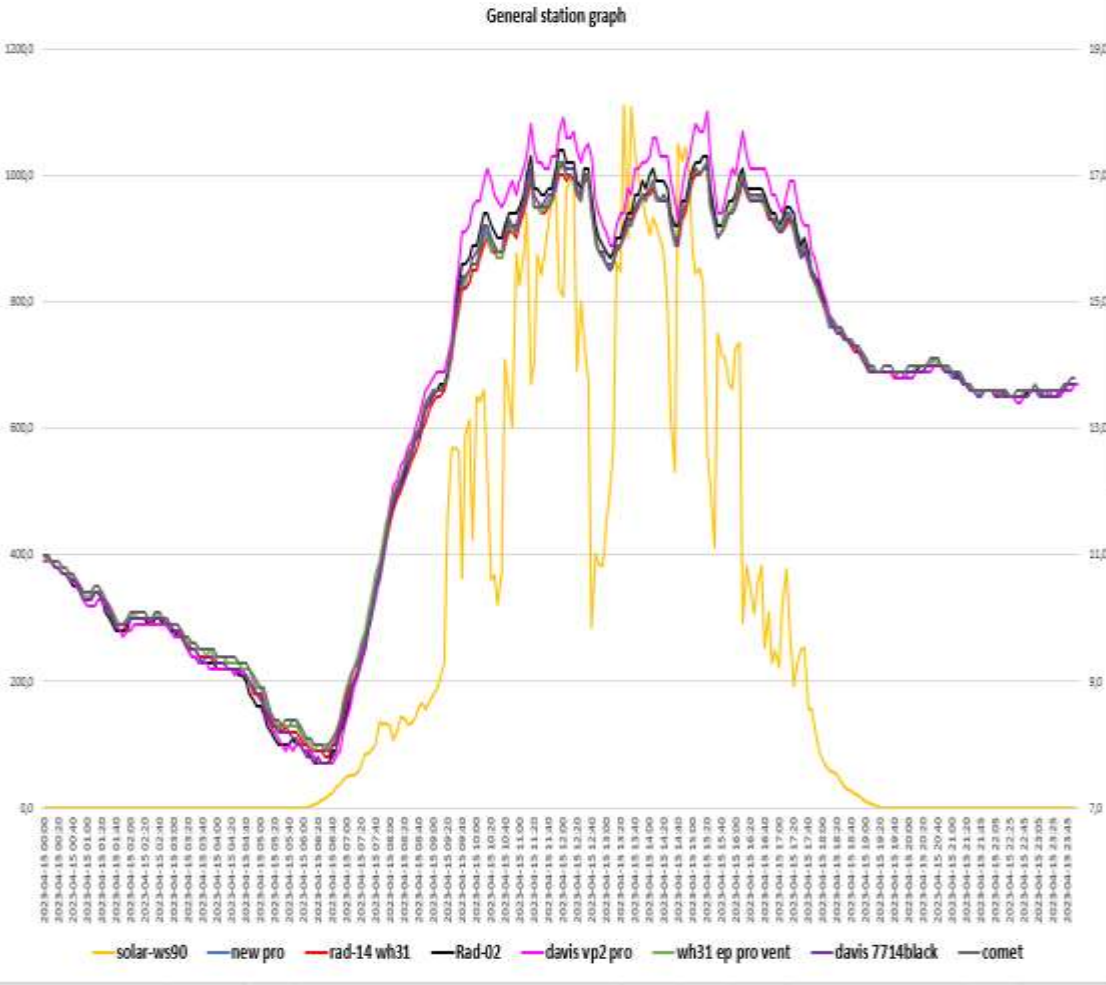
METPRO OLD (probe sensor wh32EP ecowitt) -RAD-02 (probe sensor wh31 EP ecowitt)



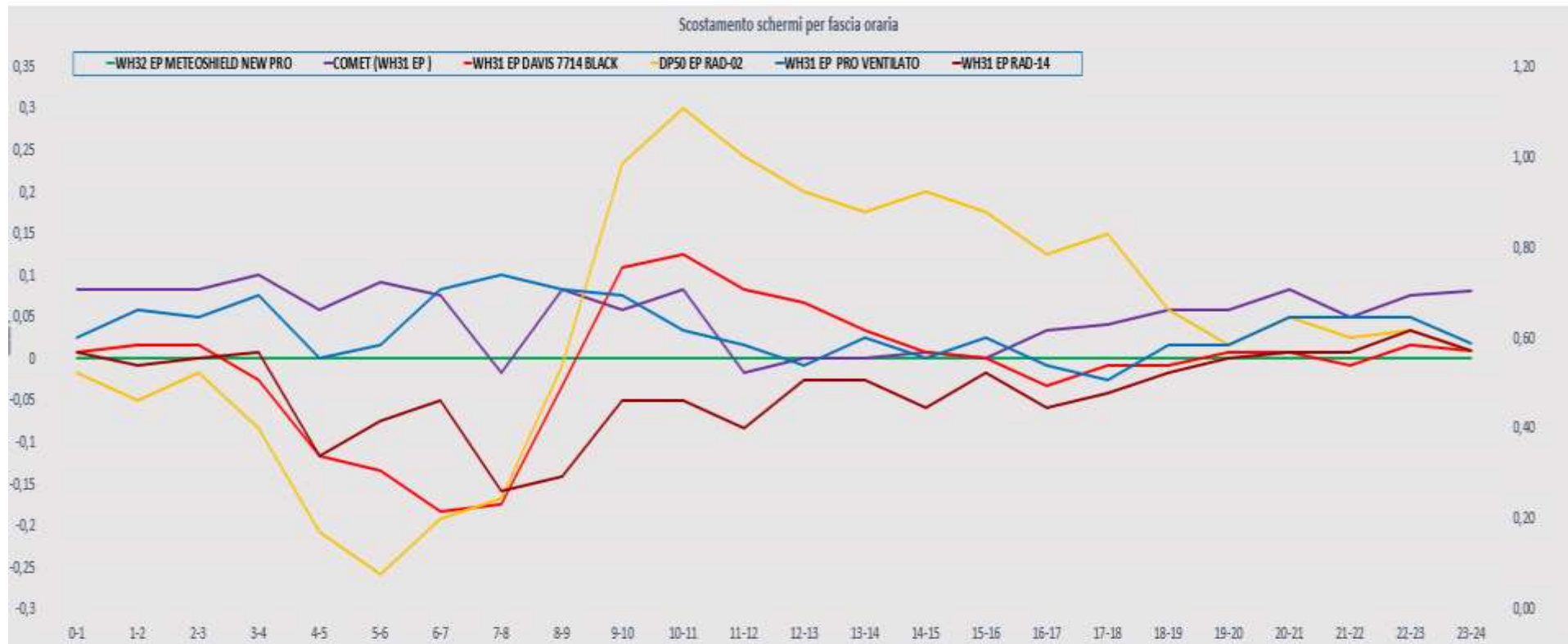
STATISTICAL DATA (MAXIM UM MINIMUM AVERAGES)

vento medio 24H	4,1 km/h	vento medio dalle ore 08:00 alle 18:00	5,9 km/h	dalle ore 08:00 alle 18:00	scostamenti dalle ore 08:00 alle 18:00						
media met pro New	13,201			media met pro 3° gen	15,8						
max met pro New	17,2	schermo di riferimento		max met pro 3° gen	17,2						
min met pro New	7,9			min met pro 3° gen	11,6						
media davis vp2 pro	13,392	scost medio davis vp2 pro	0,19	media davis vp2 pro	16,3	scost medio davis vp2 pro	0,5	media davis7714black	15,8	scost medio davis 7714 black	0,0
max davis vp2pro	18	scost max davis vp2 pro	1,1	max davis vp2 pro	18,0	scost max davis vp2 pro	1,1	max davis7714 black	17,2	scost max davis 7714 black	0,3
min davis vp2 pro	7,7	scost min davis vp2 pro	-0,5	min davis vp2 pro	11,8	scost min davis vp2 pro	0,2	min davis 7714 black	11,6	scost min davis 7714 black	-0,1
media rad-14	13,163	scost medio rad-14	-0,04	media Rad-14	15,7	scost medio rad-14	-0,1	media comet	15,8	scost medio comet	0,0
max rad-14	17,1	scost max rad-14	0,1	max rad-14	17,1	scost max rad-14	0,1	max comet	17,2	scost max comet	0,2
min rad-14	7,8	scost min rad-14	-0,2	min Rad-14	11,5	scost min rad-14	-0,2	min comet	11,7	scost min comet	-0,1
media rad-02	13,201	scost medio Rad-02	0,04	media Rad-02	15,9	scost medio rad-02	0,2	media pro ventilato	15,8	scost medio pro vent	0,0
max rad-02	17,2	scost max Rad-02	0,4	max Rad-02	17,4	scost max rad-02	0,4	max pro ventilato	17,2	scost max pro vent	0,2
min rad-02	7,9	scost min Rad-02	-0,4	min Rad-14	11,6	scost min rad-02	-0,1	min pro ventilato	11,7	scost min pro vent	-0,1
media pro ventilato	13,236	scost medio pro vent	0,03								
max pro ventilato	17,2	scost max pro vent	0,2								
min pro ventilato	7,9	scost min pro vent	-0,1								
media davis 7714	13,192	scost medio davis 7714	-0,01								
max davis 7714	17,2	scost max davis 7714	0,3								
min davis 7714	7,7	scost min davis 7714	-0,3								

general summary



screen shift by time slot



RAIN 24h

Pluviometro ,manuale TFA	0.0 mm
Pluviometro vp2 pro	0,0 mm
Pluviometro wh40 ecowitt suolo	0,0 mm
Meteorain Barani	0,0 mm
Pluviometro gw1001 ecowitt	0,0 mm

leaf wetness-leaf wetness-Pressure

