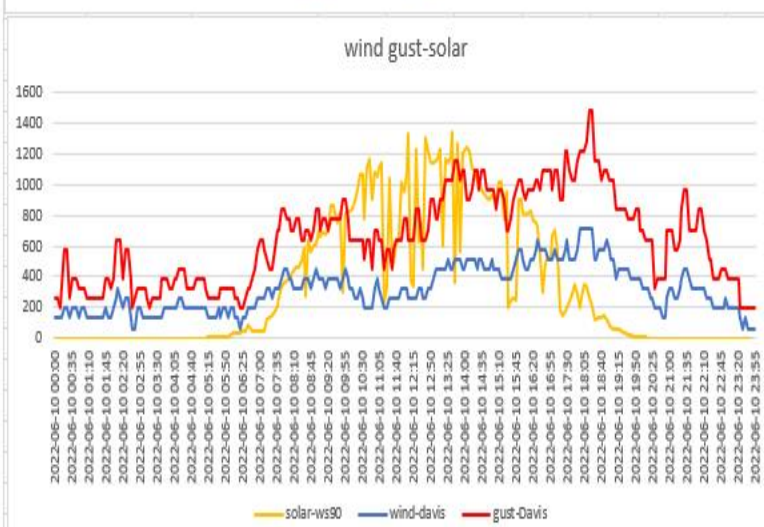
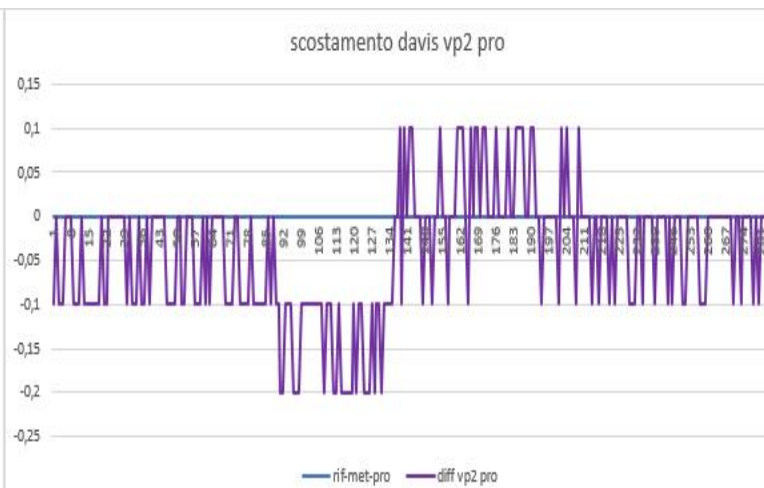
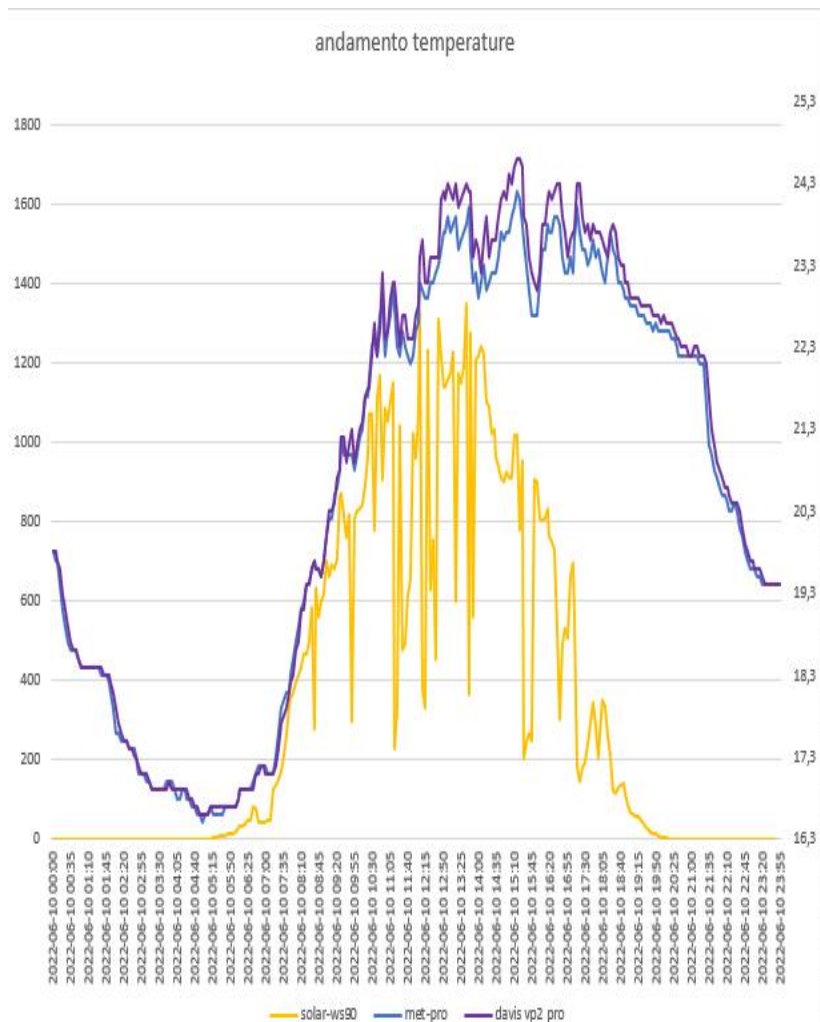
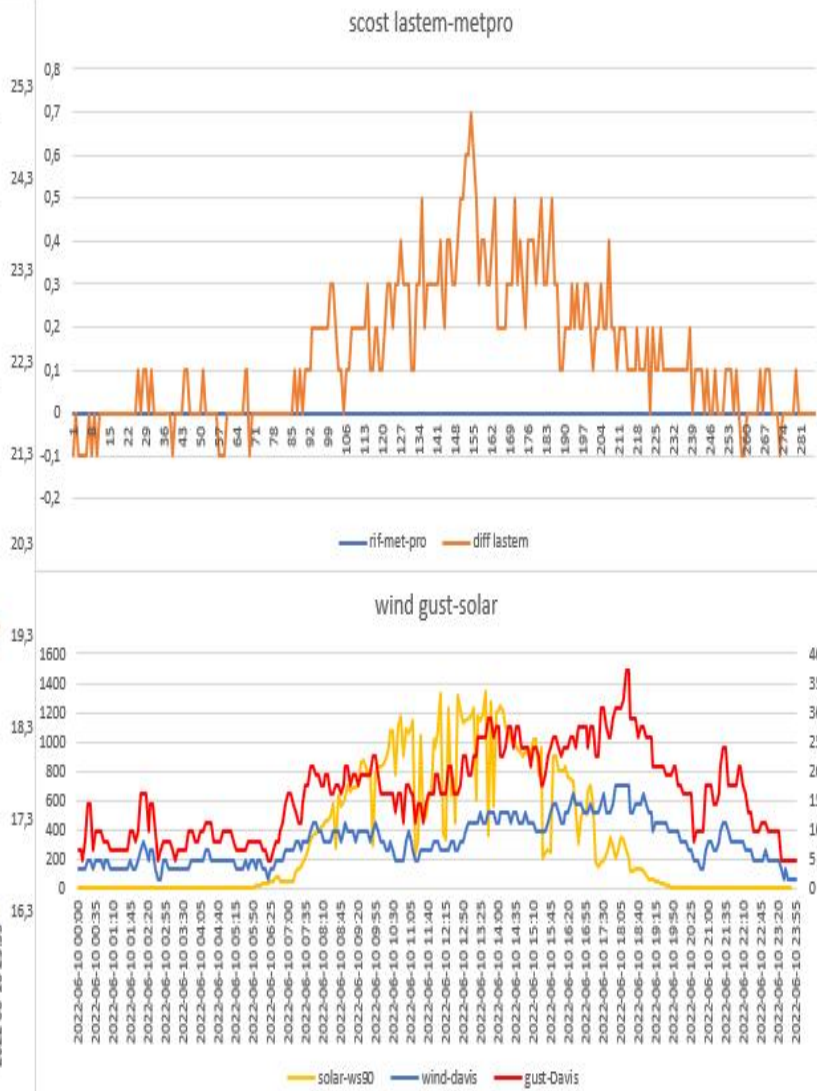
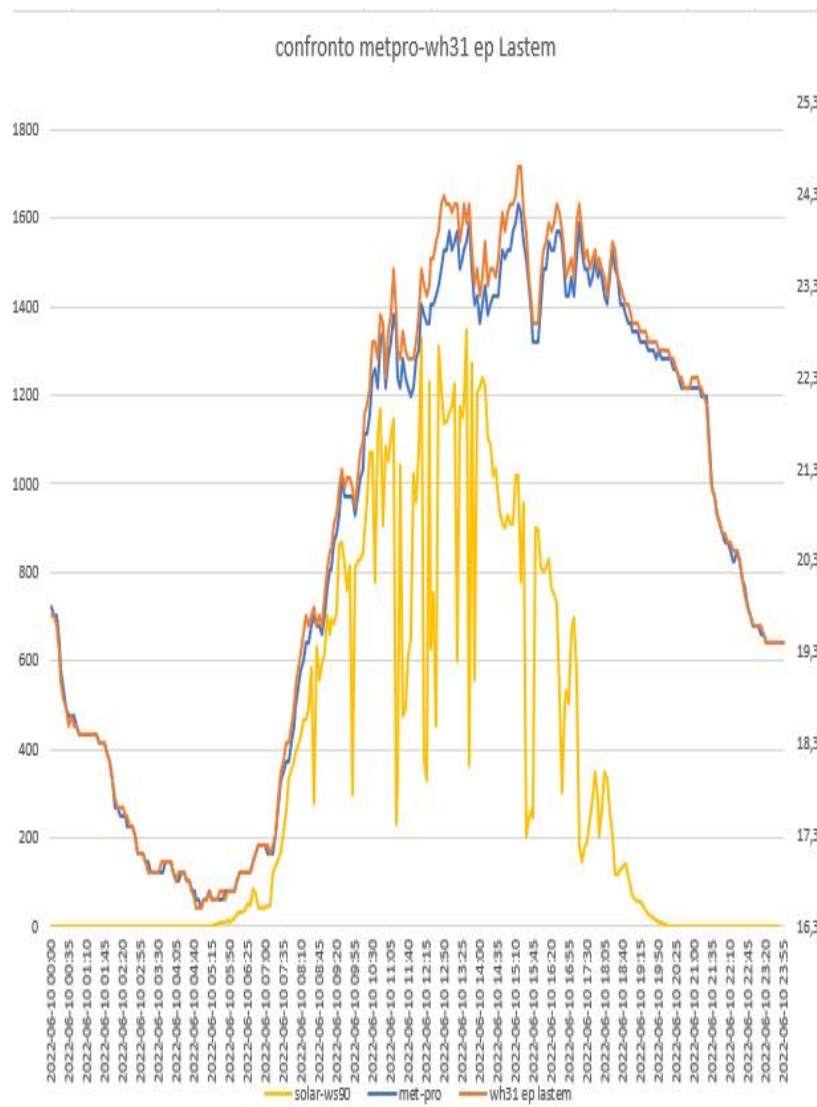


# ANDAMENTO SCHERMI DEL 10-06-2022

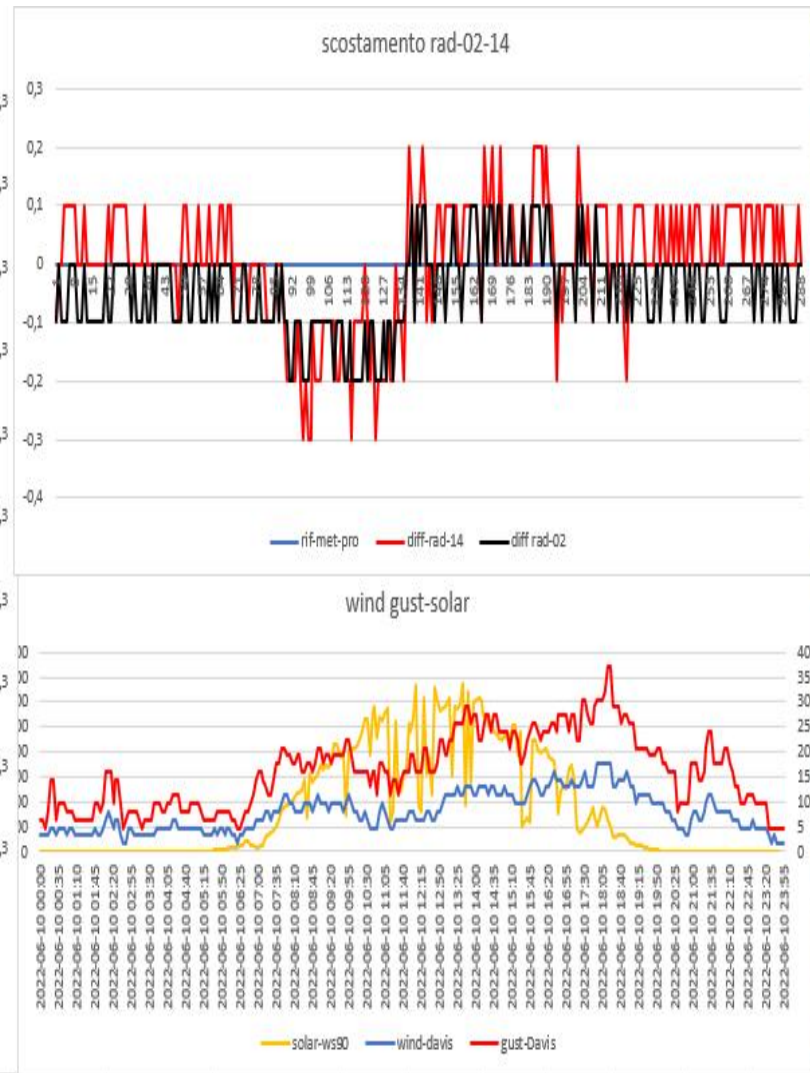
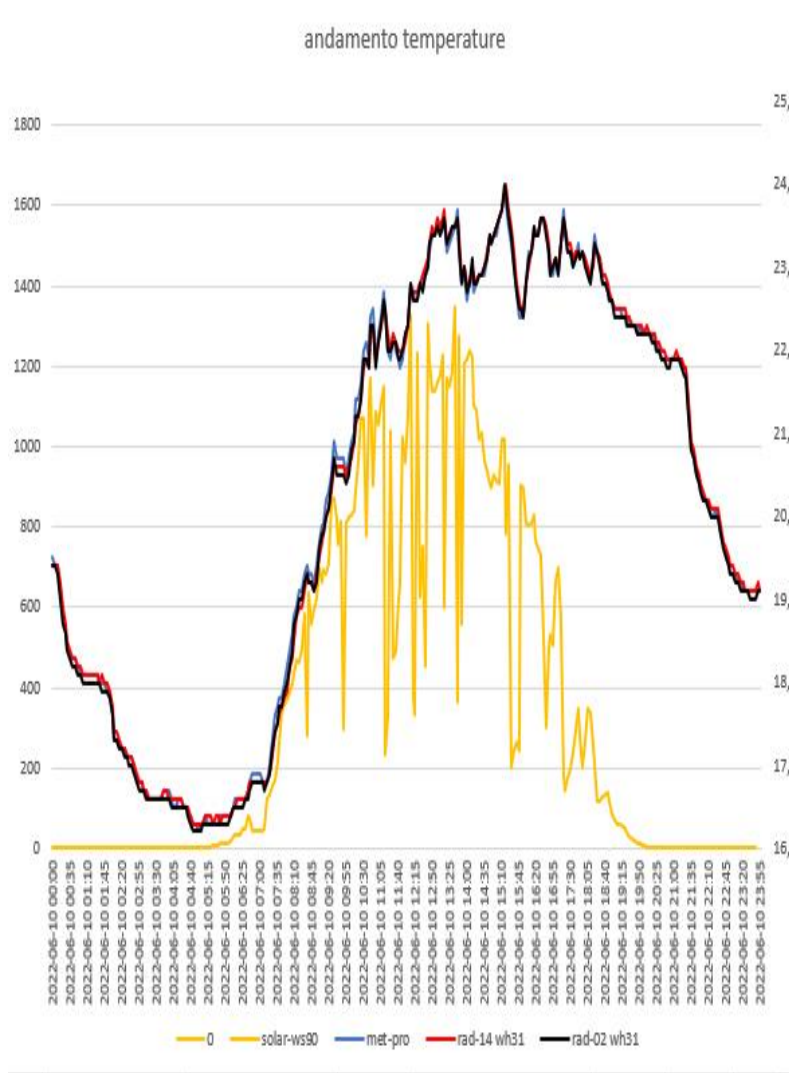
Davis vp2 pro- METEOSHIELD PR O (sensore sonda wh32EP ecowitt)



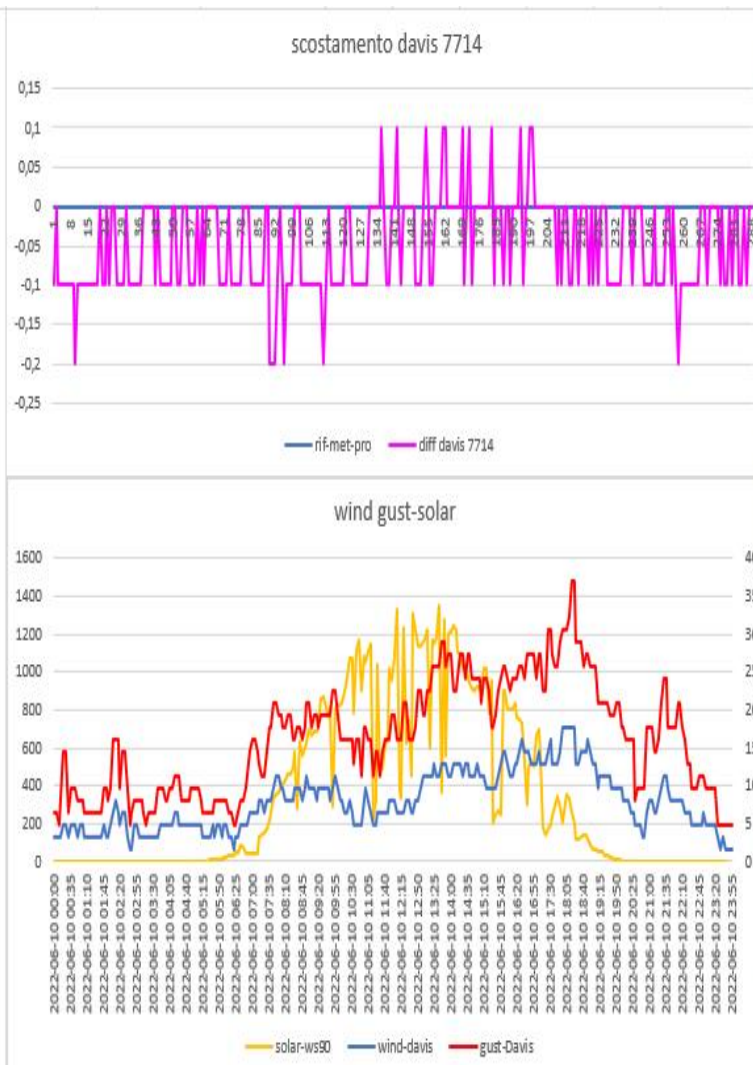
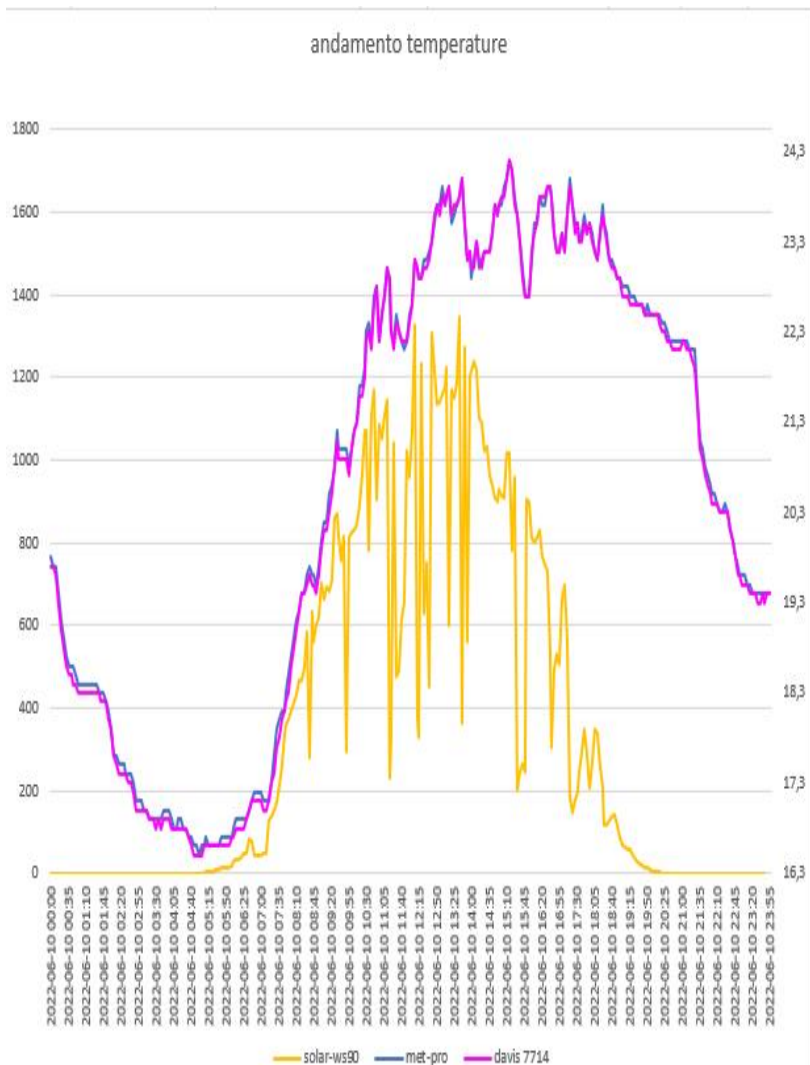
Lsi IASTEM(sensore sonda wh31EP ecowitt) - METEOSHIELD PRO (sensore sonda wh32EP ecowitt)



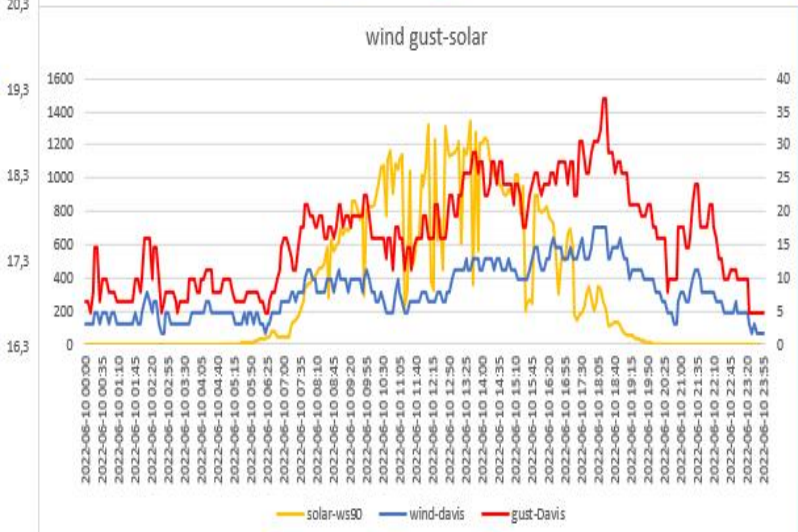
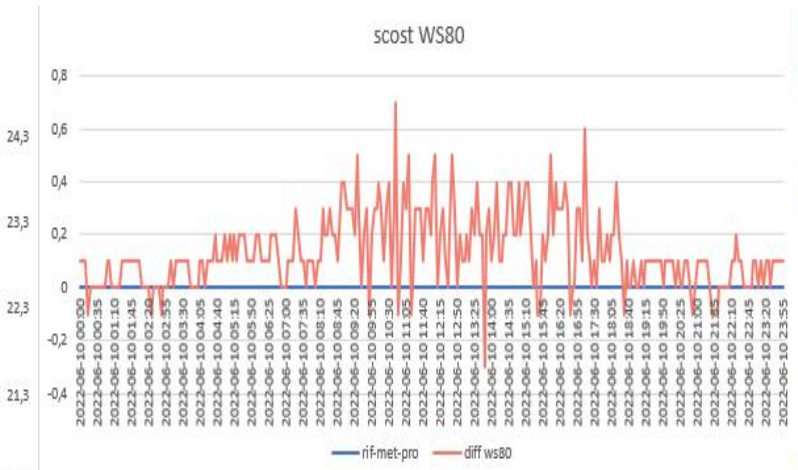
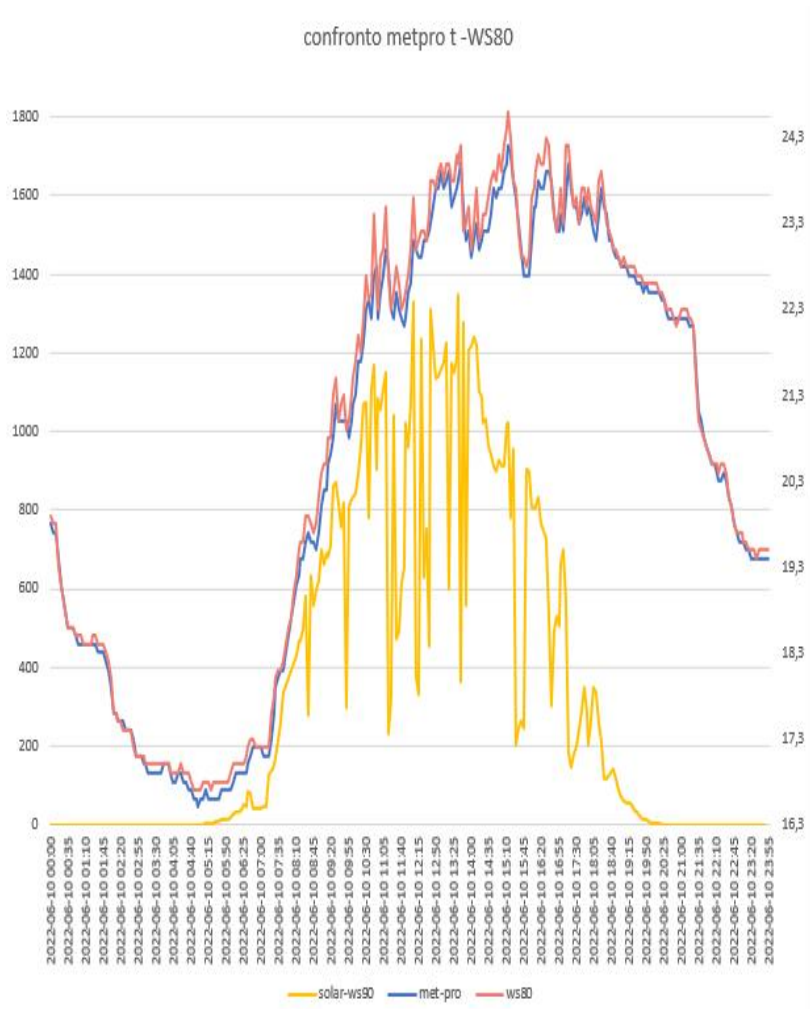
RAD-02-14(sensore sonda WH31EP ecowitt) – METEOSHIELD PRO (sensore sonda wh32EP ecowitt)



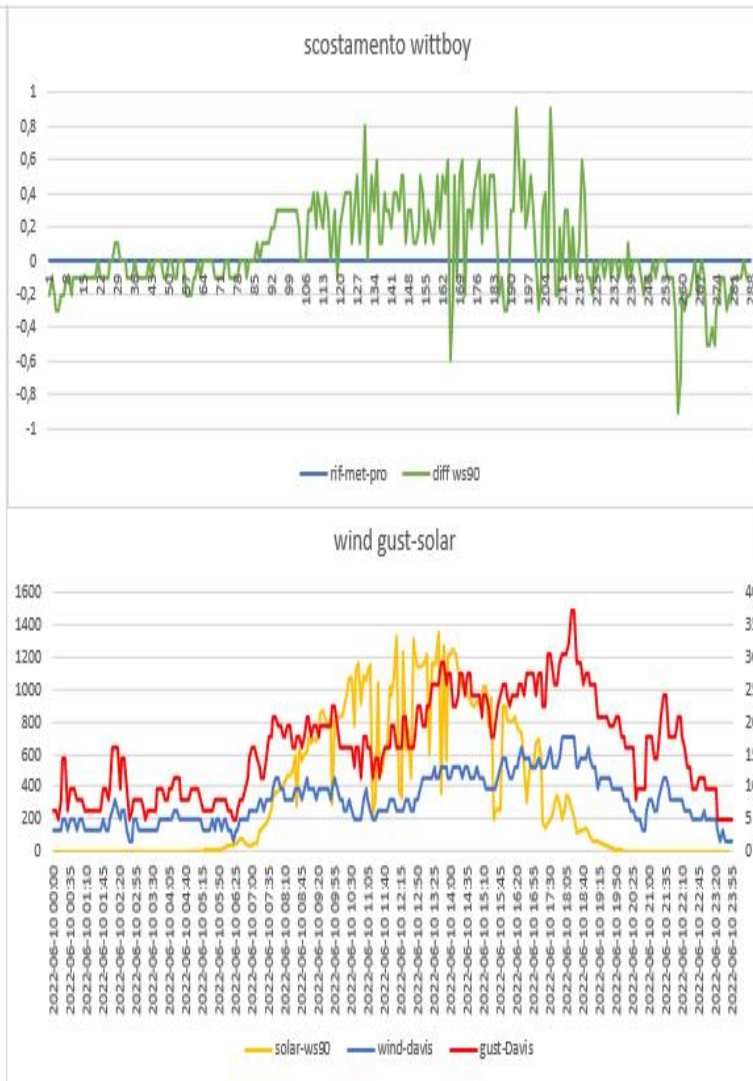
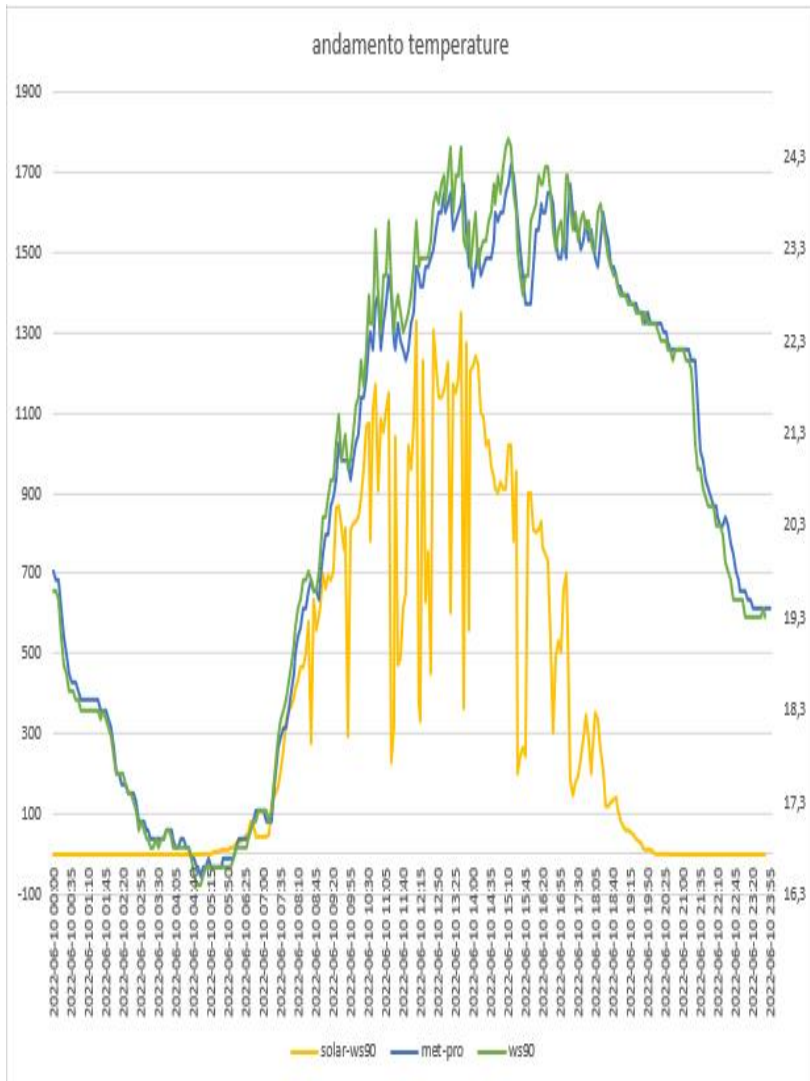
DAVIS 7714(sensore sonda wh31EP ecowitt)-METEOSHIELD PRO (sensore sonda wh32EP ecowitt)



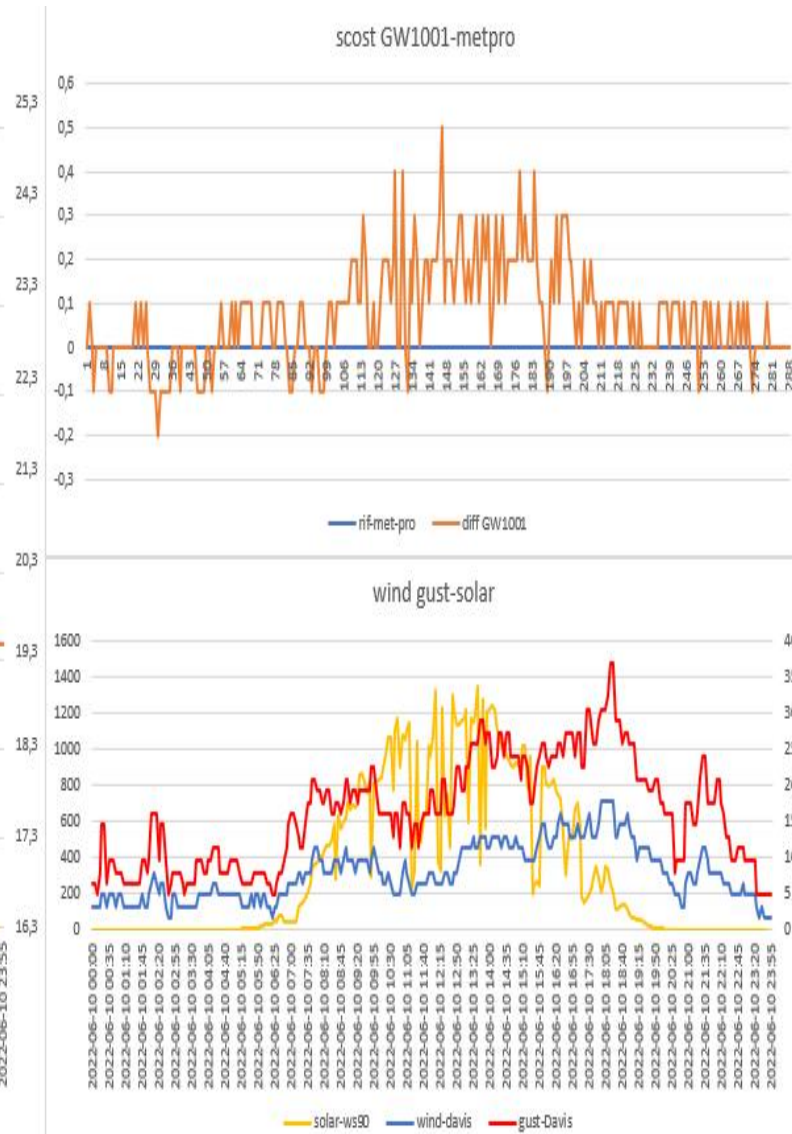
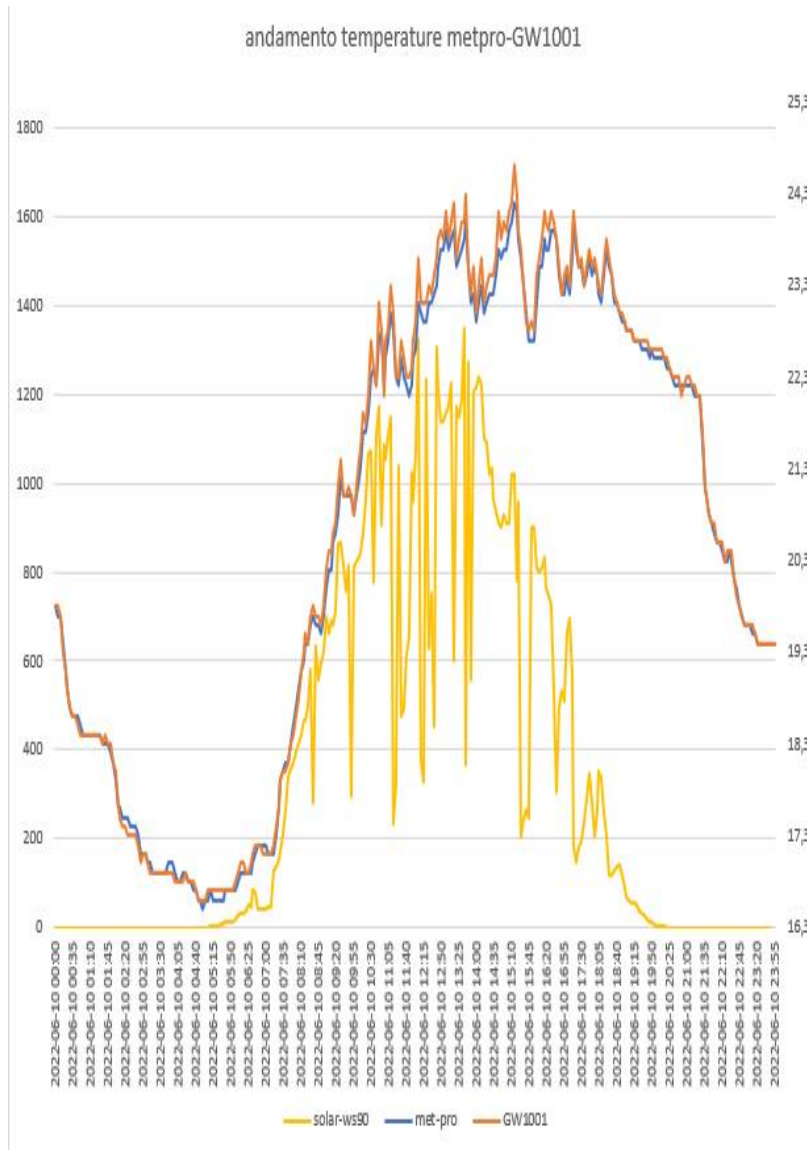
WS80 ecowitt- METEOSHIELD PRO (sensore sonda wh32EP ecowitt)



WITTBOY ecowit- METEOSHIELD PRO (sensore sonda wh32EP ecowitt)



GW1001 ecowitt-METEOSHIELD PRO (sensore sonda wh32EP ecowitt)





DATI STATISTICI (MEDIE MASSIME MINIME )

vento medio 24H	7,927777778	km/h	vento medio ore di sole	9,064957									
media met pro	20,59479167												
max met pro	24,2												
min met pro	16,5												
media GW1001	20,66631944		scost medio GW1001	0,072028									
max GW1001	24,6		scost max GW1001	0,5									
minima GW1001	16,6		scost min GW1001	-0,2									
media davis vp2 pro	20,54479167		scost medio davis vp2 pro	-0,04266									
max davis vp2pro	24,2		scost max davis vp2 pro	0,1									
min davis vp2 pro	16,5		scost min davis vp2 pro	-0,2									
media rad-14	20,60104167		scost medio rad-14	-0,04266									
max rad-14	24,3		scost max rad-14	0,1									
min rad-14	16,6		scost min rad-14	-0,2									
media rad-02	20,55243056		scost medio rad-02	-0,04236									
max rad-02	24,3		scost max rad-02	0,1									
min rad-02	16,5		scost min rad-02	-0,2									
media lastem	20,72604167		scost medio lastem	0,132168		media WS80	20,72569444		scost medio WS80	0,1309			
max lastem	24,6		scost max lastem	0,7		max WS80	24,6		scost max WS80	0,7			
min lastem	16,5		scost min lastem	-0,1		min WS80	16,7		scost min WS80	-0,3			
media davis 7714	20,54479167		scost medio davis 7714	-0,05		media ws90	20,66363636		scost medio ws90	0,06049			
max davis 7714	24,2		scost max davis 7714	0,1		max ws90	24,5		scost max ws90	0,9			
min davis 7714	16,5		scost min davis 7714	-0,2		min ws90	16,4		scost min ws90	-0,9			